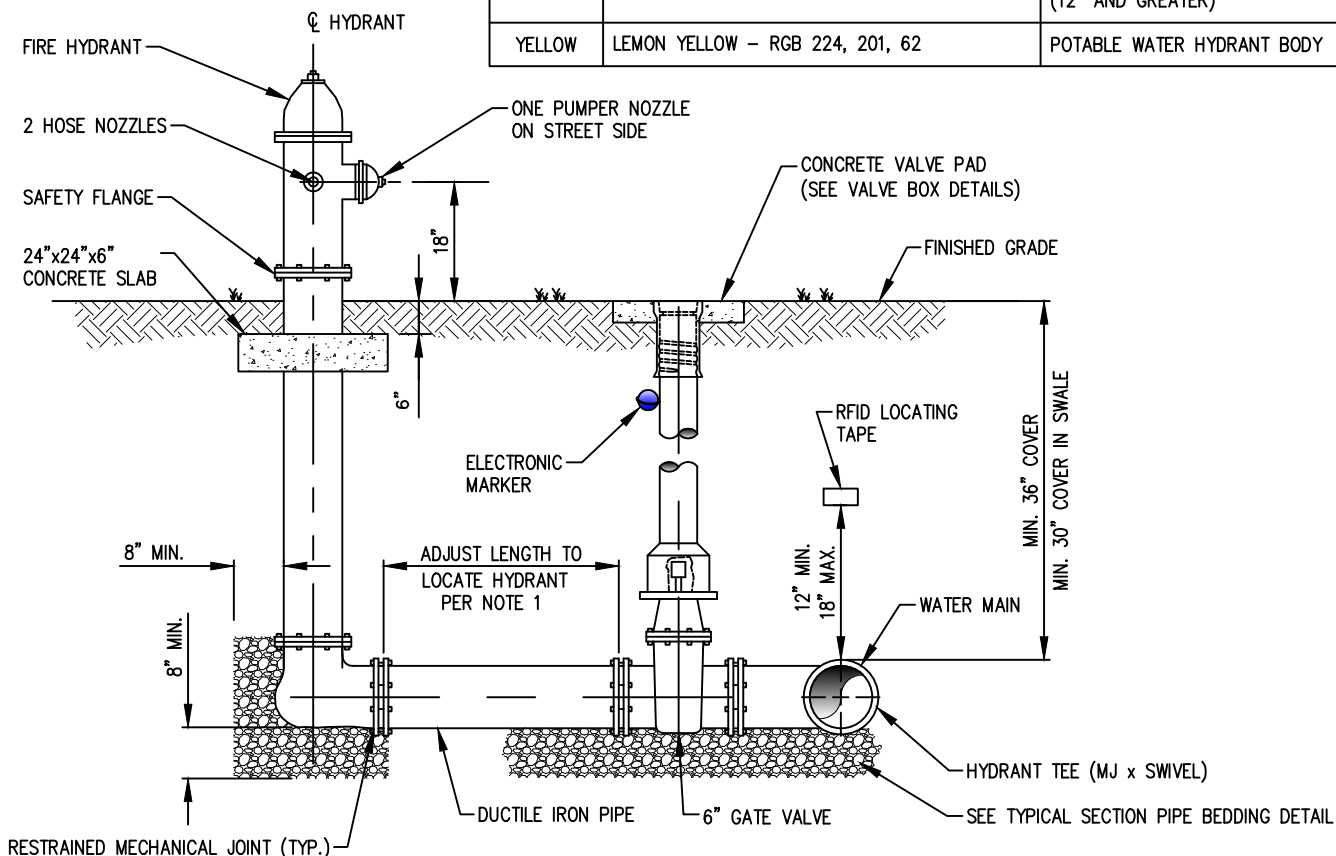


SAFETY PAINT		
COLOR	PAINT COLOR NAME - NUMBER	APPLICATION
RED	CANDY APPLE RED - RGB 186, 42, 26	POTABLE WATER HYDRANT BONNET (6")
ORANGE	TANGERINE ORANGE - RGB 217, 110, 25	POTABLE WATER HYDRANT BONNET (8" AND 10")
GREEN	SPEARMINT GREEN - RGB 46, 142, 84	POTABLE WATER HYDRANT BONNET (12" AND GREATER)
YELLOW	LEMON YELLOW - RGB 224, 201, 62	POTABLE WATER HYDRANT BODY



NOTES:

1. SET HYDRANT AT MAXIMUM 12' OFFSET FROM EDGE OF FIRE LANE. HYDRANT LOCATION TO BE APPROVED BY THE CITY OF CAPE CORAL.
2. DO NOT PLACE HYDRANT VALVE AND VALVE BOX IN SWALE.
3. PIPE TO HAVE A MINIMUM 30" COVER IN SWALE.
4. RESTRAIN ALL CONNECTIONS.
5. PAINT TO BE APPLIED IN FACTORY BY MANUFACTURER.
POTABLE - YELLOW BODY (BONNETS - 6" = RED, 8" & 10" = ORANGE, 12" AND ABOVE = GREEN)
PRIVATELY MAINTAINED: RED BODY AND RED BONNET.
6. PROVIDE A RAISED BLUE PAVEMENT MARKER IN PAVEMENT PERPENDICULAR TO THE FIRE HYDRANT FIVE FEET OFF THE EDGE OF PAVEMENT.
7. HYDRANTS SHALL BE PLACED TO AVOID OBSTRUCTIONS (POWER POLES, DRAINAGE INLETS ETC.). MINIMUM CLEARANCE BETWEEN AN OBSTRUCTION AND HYDRANTS SHALL BE 5 FEET.
8. CAUTION SHOULD BE TAKEN NOT TO ALLOW ANY MATERIAL TO FALL INTO THE VALVE BOX CYLINDER. CONTRACTOR WILL BE RESPONSIBLE FOR REMOVING ANY AND ALL MATERIAL RESULTING FROM THEIR VALVE BOX INSTALLATION AND/OR ADJUSTMENT OPERATION.
9. FOR PRODUCTS AND MATERIALS SEE THE PROJECT SPECIFICATIONS AND THE CITY OF CAPE CORAL QUALIFIED PRODUCTS LIST.
10. INSTALL RFID LOCATING TAPE PER MANUFACTURER'S INSTRUCTIONS.
11. IF NECESSARY, USE OFFSET FITTING AND ROTATE OFFSET FITTING TO ACHIEVE REQUIRED NOZZLE HEIGHT ABOVE FINISHED GRADE.

W-201

HYDRANT ASSEMBLY

NOT TO SCALE

REVISION DATE
07-14-2022
ADOPTION DATE
08-17-2022

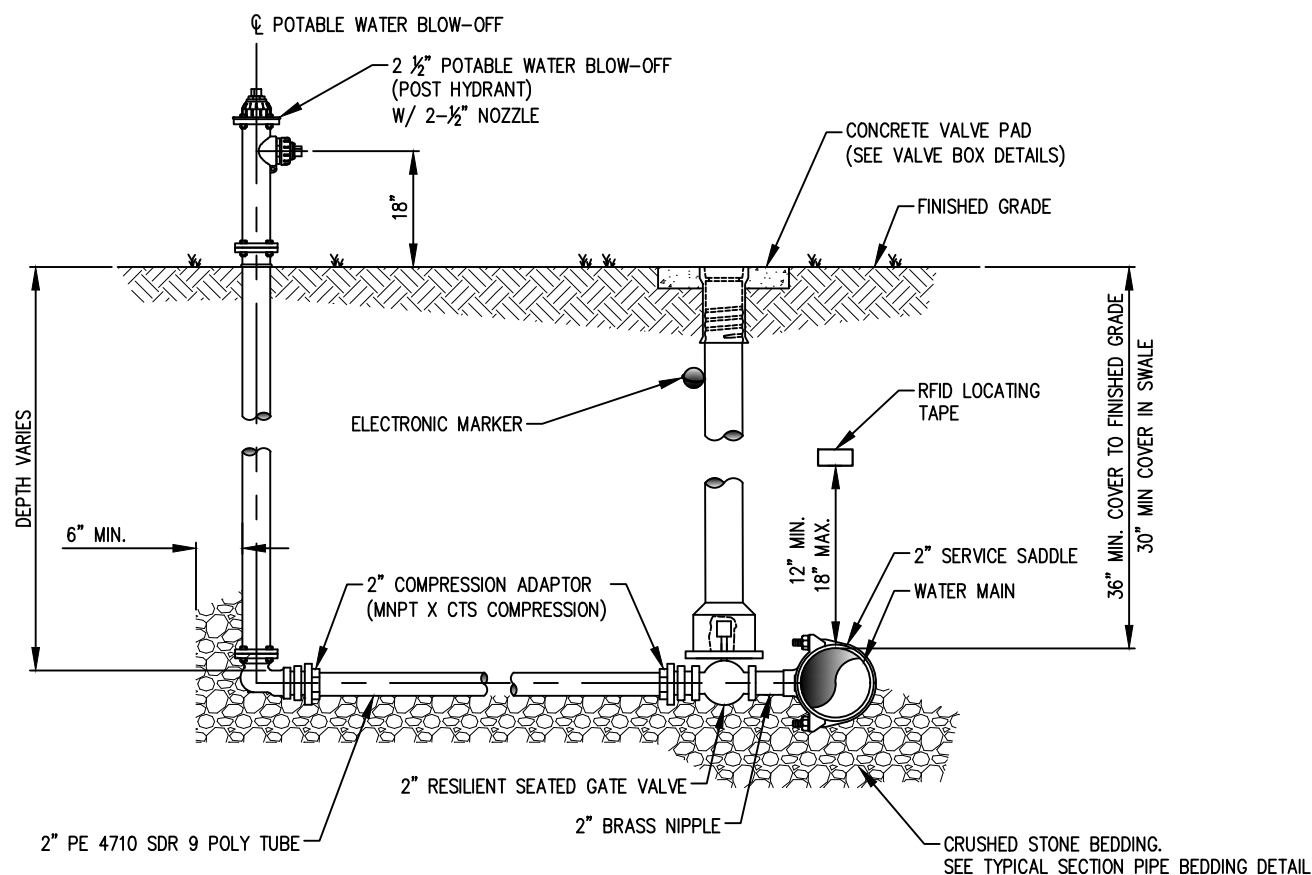


CITY OF CAPE CORAL
UTILITIES DEPARTMENT
P.O. BOX 150027
CAPE CORAL, FLORIDA 33915-0027

DETAIL NAME
HYDRANT ASSEMBLY

DETAIL NO.
W-201

SAFETY PAINT		
COLOR	PAINT COLOR NAME - NUMBER	APPLICATION
BLUE	TRUE BLUE – RGB 0, 94, 145	POTABLE WATER BLOW-OFF BODY AND BONNET



NOTES:

1. SET POTABLE WATER BLOW-OFF ASSEMBLY IN UTILITY EASEMENT ON THE RIGHT-OF-WAY LINE. BLOW-OFF LOCATION TO BE APPROVED BY THE CITY OF CAPE CORAL.
2. DO NOT PLACE BLOW-OFF VALVE AND VALVE BOX IN SWALE.
3. PIPE TO HAVE A MINIMUM 30" COVER IN SWALE.
4. RESTRAIN ALL CONNECTIONS.
5. PAINT SHALL BE APPLIED IN FACTORY BY MANUFACTURER
POTABLE WATER BLOW-OFF – BLUE BODY AND BLUE BONNET
6. POTABLE WATER BLOW-OFFS SHALL BE LOCATED TO AVOID OBSTRUCTIONS (POWER POLES, DRAINAGE INLETS ETC). MINIMUM CLEARANCE BETWEEN AN OBSTRUCTION AND POTABLE WATER BLOW-OFFS SHALL BE 5 FEET.
7. CAUTION SHOULD BE TAKEN NOT TO ALLOW ANY MATERIAL TO FALL INTO THE VALVE BOX CYLINDER. CONTRACTOR WILL BE RESPONSIBLE FOR REMOVING ANY AND ALL MATERIAL RESULTING FROM THEIR VALVE BOX INSTALLATION AND/OR ADJUSTMENT OPERATION.
8. FOR PRODUCTS AND MATERIALS SEE THE PROJECT SPECIFICATIONS AND THE CITY OF CAPE CORAL QUALIFIED PRODUCTS LIST.
9. INSTALL RFID LOCATING TAPE PER MANUFACTURER'S INSTRUCTIONS.

W-202 **2 1/2" POTABLE WATER BLOW-OFF**
NOT TO SCALE

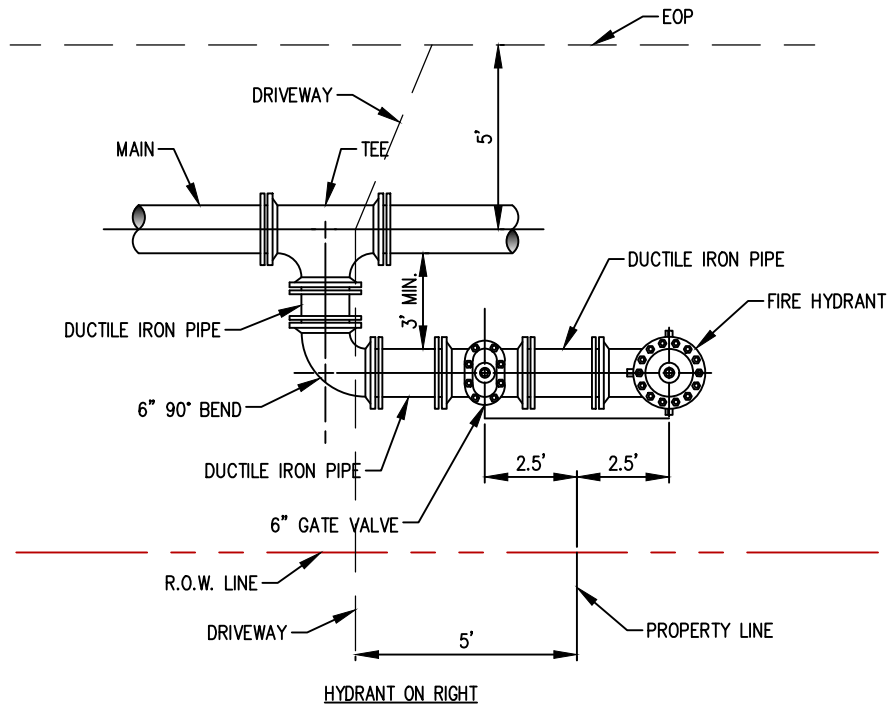
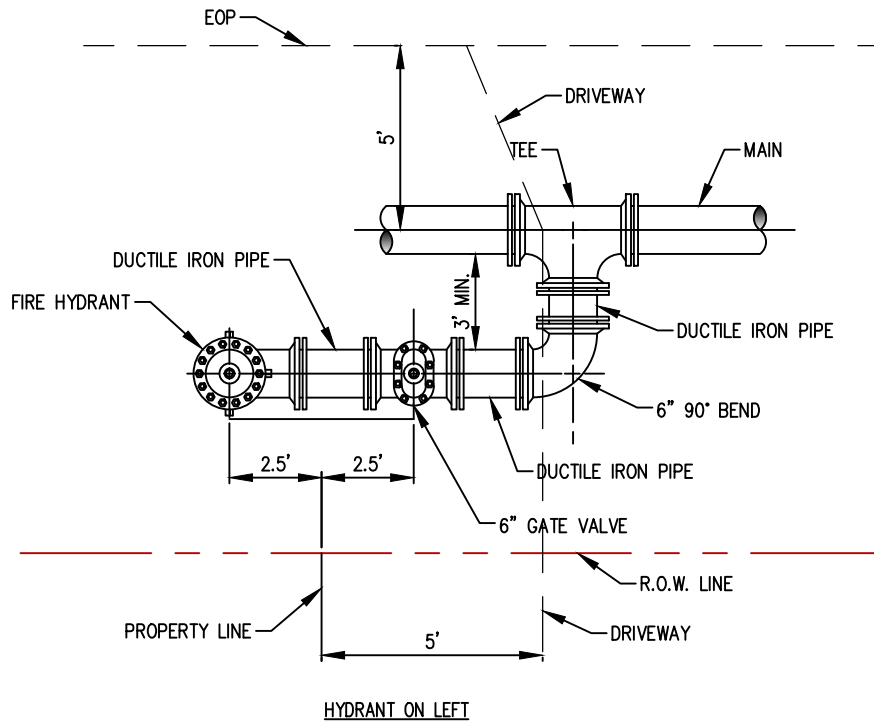
REVISION DATE
07-14-2022
ADOPTION DATE
08-17-2022



CITY OF CAPE CORAL
UTILITIES DEPARTMENT
P.O. BOX 150027
CAPE CORAL, FLORIDA 33915-0027

DETAIL NAME
**POTABLE WATER
BLOW-OFF ASSEMBLY**

DETAIL NO.
W-202



NOTE: SEE HYDRANT ASSEMBLY DETAIL FOR FURTHER DETAILS.

W-203

HYDRANT ASSEMBLY PARALLEL TO MAIN

NOT TO SCALE

REVISION DATE
07-14-2022
ADOPTION DATE
08-17-2022



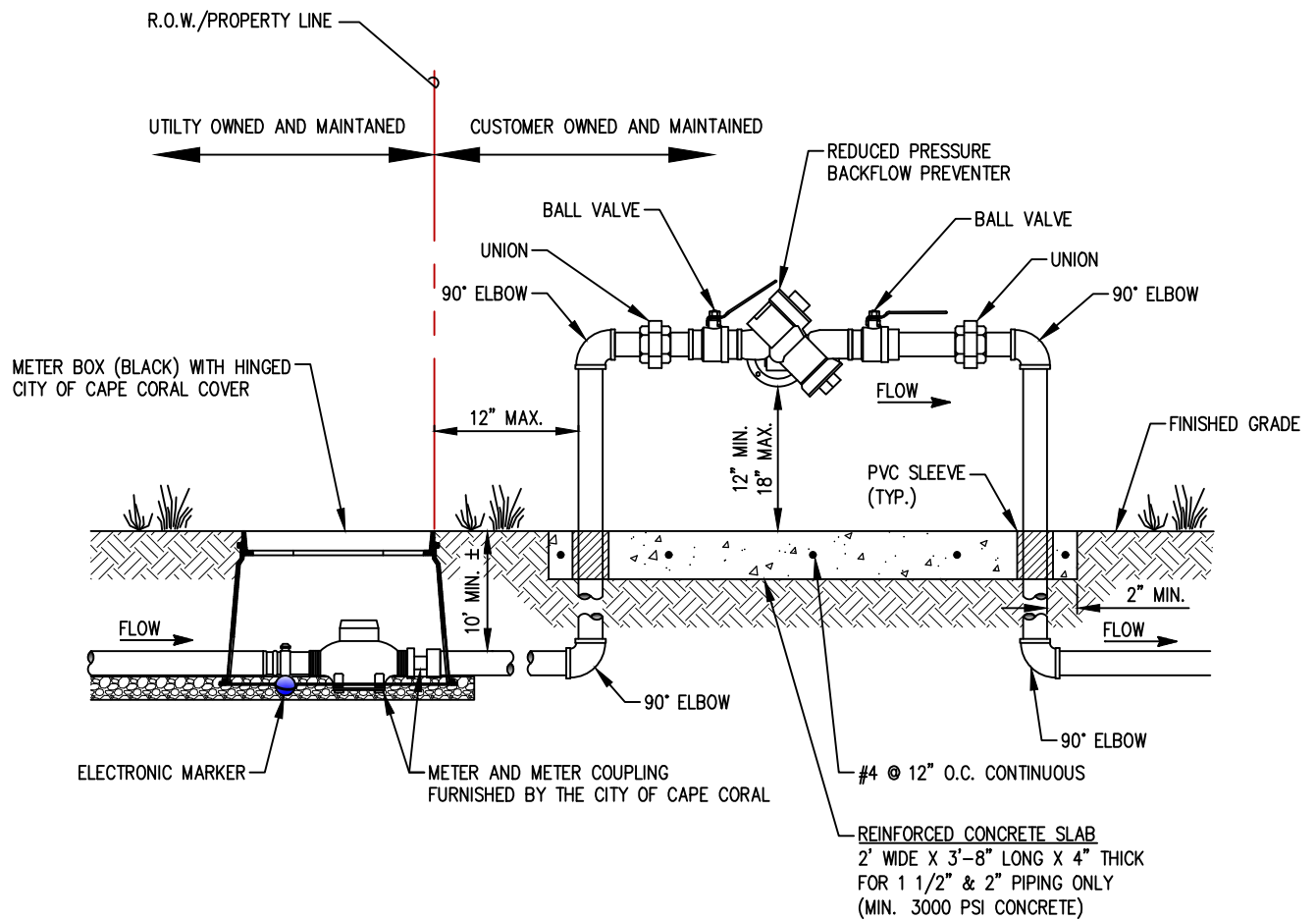
CITY OF CAPE CORAL
UTILITIES DEPARTMENT
P.O. BOX 150027
CAPE CORAL, FLORIDA 33915-0027

DETAIL NAME

HYDRANT ASSEMBLY
PARALLEL TO MAIN

DETAIL NO.

W-203



NOTES:

1. ALL PIPE MUST BE TYPE 'K' COPPER OR NO LEAD BRASS ONLY. PVC NOT PERMITTED.
2. INSPECTIONS ARE REQUIRED FOR SYSTEM TIE-IN CONNECTION, ASSEMBLY CONNECTION, AND BACKFLOW CERTIFICATION.
3. A REDUCED PRESSURE DETECTOR BACKFLOW ASSEMBLY SHALL BE USED WHEN HIGH HAZARDS, AS DEFINED BY AWWA M-14 (E.G., RISK OF CHEMICAL ADDITION, MEDICAL FACILITIES, INDUSTRIAL FACILITIES, PROPERTIES USING RECLAIMED WATER, ETC.), EXIST.
4. FOR PRODUCTS AND MATERIALS SEE THE PROJECT SPECIFICATIONS AND THE CITY OF CAPE CORAL QUALIFIED PRODUCTS LIST.
5. PRIOR TO INSTALLATION, LOCATION OF BACKFLOW ASSEMBLY TO BE VERIFIED BY CITY OF CAPE CORAL.

W-240 **3/4" TO 2" REDUCED PRESSURE BACKFLOW ASSEMBLY (MULTI-FAMILY/COMMERCIAL)**
NOT TO SCALE

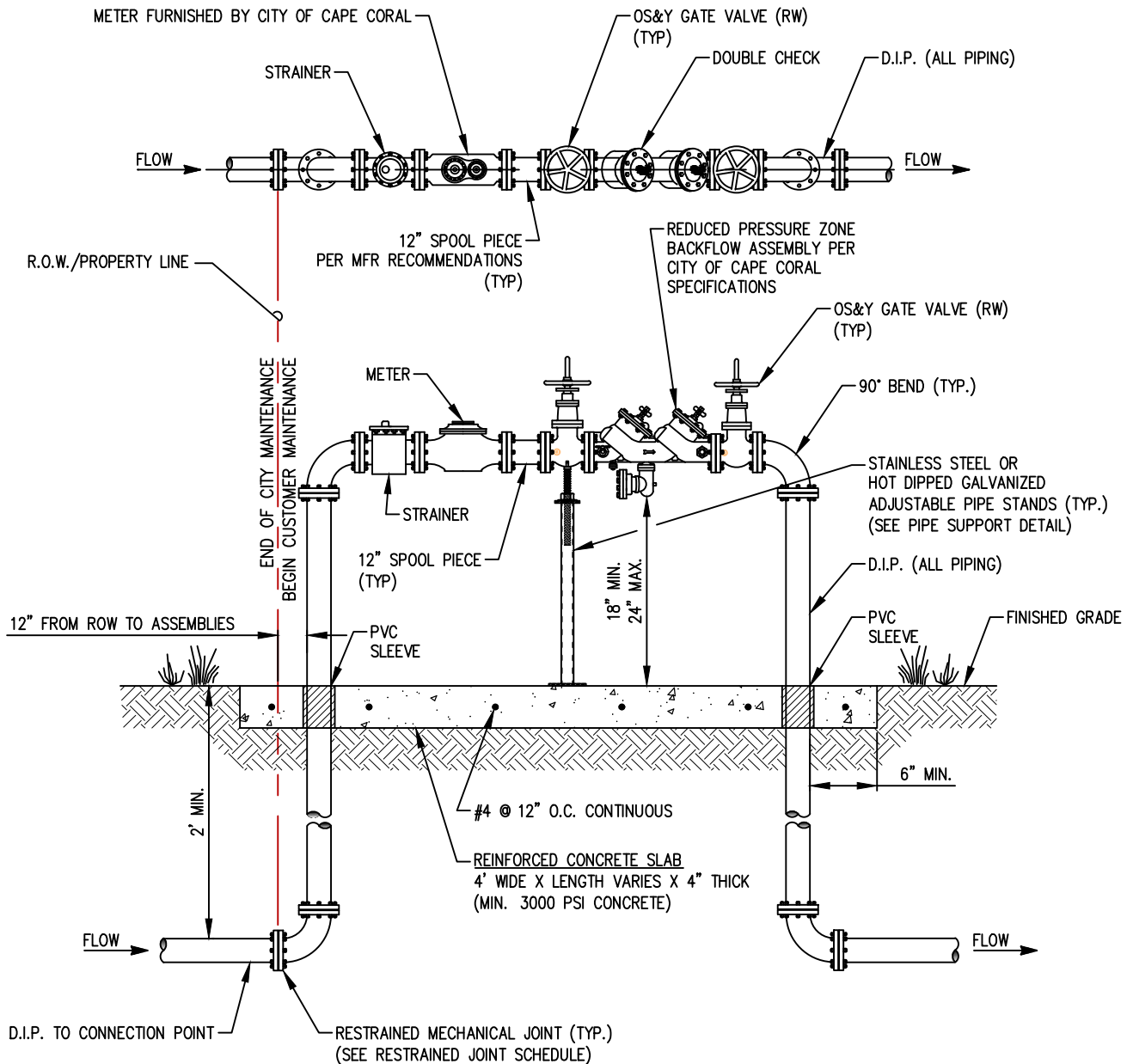
REVISION DATE
07-14-2022
ADOPTION DATE
08-17-2022



CITY OF CAPE CORAL
UTILITIES DEPARTMENT
P.O. BOX 150027
CAPE CORAL, FLORIDA 33915-0027

DETAIL NAME
3/4" TO 2" REDUCED PRESSURE BACKFLOW ASSEMBLY (MULTI-FAMILY/COMMERCIAL)

DETAIL NO.
W-240



NOTES:

1. ALL ABOVE GROUND PIPE SHALL BE FLANGED END DUCTILE IRON PIPE, PRESSURE CLASS 350. ALL NUTS AND BOLTS SHALL BE AMERICAN MADE 316 STAINLESS STEEL.
2. INSPECTIONS ARE REQUIRED FOR SYSTEM TIE-IN CONNECTION, ASSEMBLY CONNECTION, AND BACKFLOW CERTIFICATION.
3. THIS ASSEMBLY SHALL BE PAINTED WITH EPOXY BLUE IN ACCORDANCE WITH SECTION 09800 OF THE CITY OF CAPE CORAL TECHNICAL SPECIFICATIONS.
4. A REDUCED PRESSURE DETECTOR BACKFLOW ASSEMBLY SHALL BE USED WHEN HIGH HAZARDS, AS DEFINED BY AWWA M-14 (e.g., RISK OF CHEMICAL ADDITION, MEDICAL FACILITIES, INDUSTRIAL FACILITIES, PROPERTIES USING RECLAIMED WATER, ETC.), EXIST.
5. FOR PRODUCTS AND MATERIALS SEE THE PROJECT SPECIFICATIONS AND THE CITY OF CAPE CORAL QUALIFIED PRODUCTS LIST.
6. PRIOR TO INSTALLATION, LOCATION OF BACKFLOW ASSEMBLY TO BE VERIFIED BY CITY OF CAPE CORAL.
7. PRIOR TO INSTALLATION, LOCATION AND NUMBER OF PIPE SUPPORTS NEEDED TO BE DETERMINED BY CITY OF CAPE CORAL. SEE PIPE SUPPORT DETAIL.

W-241 **3" AND UP POTABLE WATER METER AND BACKFLOW ASSEMBLY**
NOT TO SCALE

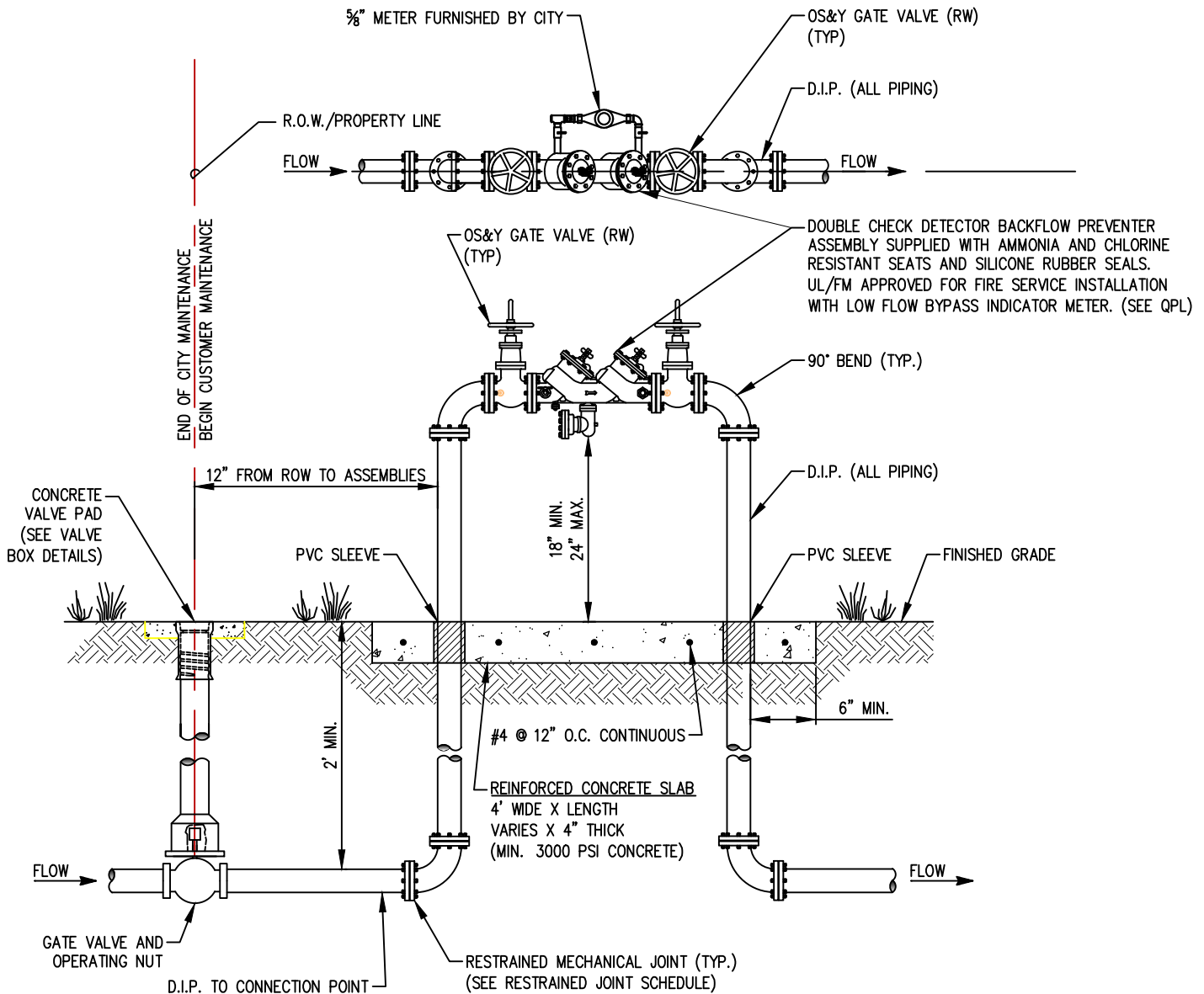
REVISION DATE
07-14-2022
ADOPTION DATE
08-17-2022



CITY OF CAPE CORAL
UTILITIES DEPARTMENT
P.O. BOX 150027
CAPE CORAL, FLORIDA 33915-0027

DETAIL NAME
**3" AND UP POTABLE WATER
METER AND BACKFLOW ASSEMBLY**

DETAIL NO.
W-241



NOTES:

1. ALL ABOVE GROUND PIPE SHALL BE FLANGED END DUCTILE IRON PIPE, PRESSURE CLASS 350. ALL NUTS AND BOLTS SHALL BE AMERICAN MADE 316 STAINLESS STEEL.
2. INSPECTIONS ARE REQUIRED FOR SYSTEM TIE-IN CONNECTION, ASSEMBLY CONNECTION, AND BACKFLOW CERTIFICATION.
3. A FIRE LINE ACCOUNT MUST BE SET UP THROUGH CUSTOMER BILLING SERVICES AND INSTALLATION OF A CITY ISSUED 5/8" METER, PRIOR TO FLUSHING AND ACTIVATION.
4. THIS ASSEMBLY SHALL BE PAINTED WITH EPOXY RED IN ACCORDANCE WITH SECTION 09800 OF THE CITY OF CAPE CORAL TECHNICAL SPECIFICATIONS.
5. A REDUCED PRESSURE DETECTOR BACKFLOW ASSEMBLY SHALL BE USED WHEN HIGH HAZARDS, AS DEFINED BY AWWA M-14 (e.g., RISK OF CHEMICAL ADDITION, MEDICAL FACILITIES, INDUSTRIAL FACILITIES, PROPERTIES USING RECLAIMED WATER, ETC.), EXIST.
6. FOR PRODUCTS AND MATERIALS SEE THE PROJECT SPECIFICATIONS AND THE CITY OF CAPE CORAL QUALIFIED PRODUCTS LIST.
7. PRIOR TO INSTALLATION, LOCATION OF FIRE LINE ASSEMBLY TO BE VERIFIED BY CITY OF CAPE CORAL.
8. PRIOR TO INSTALLATION, LOCATION AND NUMBER OF PIPE SUPPORTS NEEDED TO BE DETERMINED BY CITY OF CAPE CORAL. SEE PIPE SUPPORT DETAIL.

W-243

3" AND UP STANDARD FIRE LINE ASSEMBLY DOUBLE CHECK DETECTOR BACKFLOW PREVENTER ASSEMBLY

NOT TO SCALE

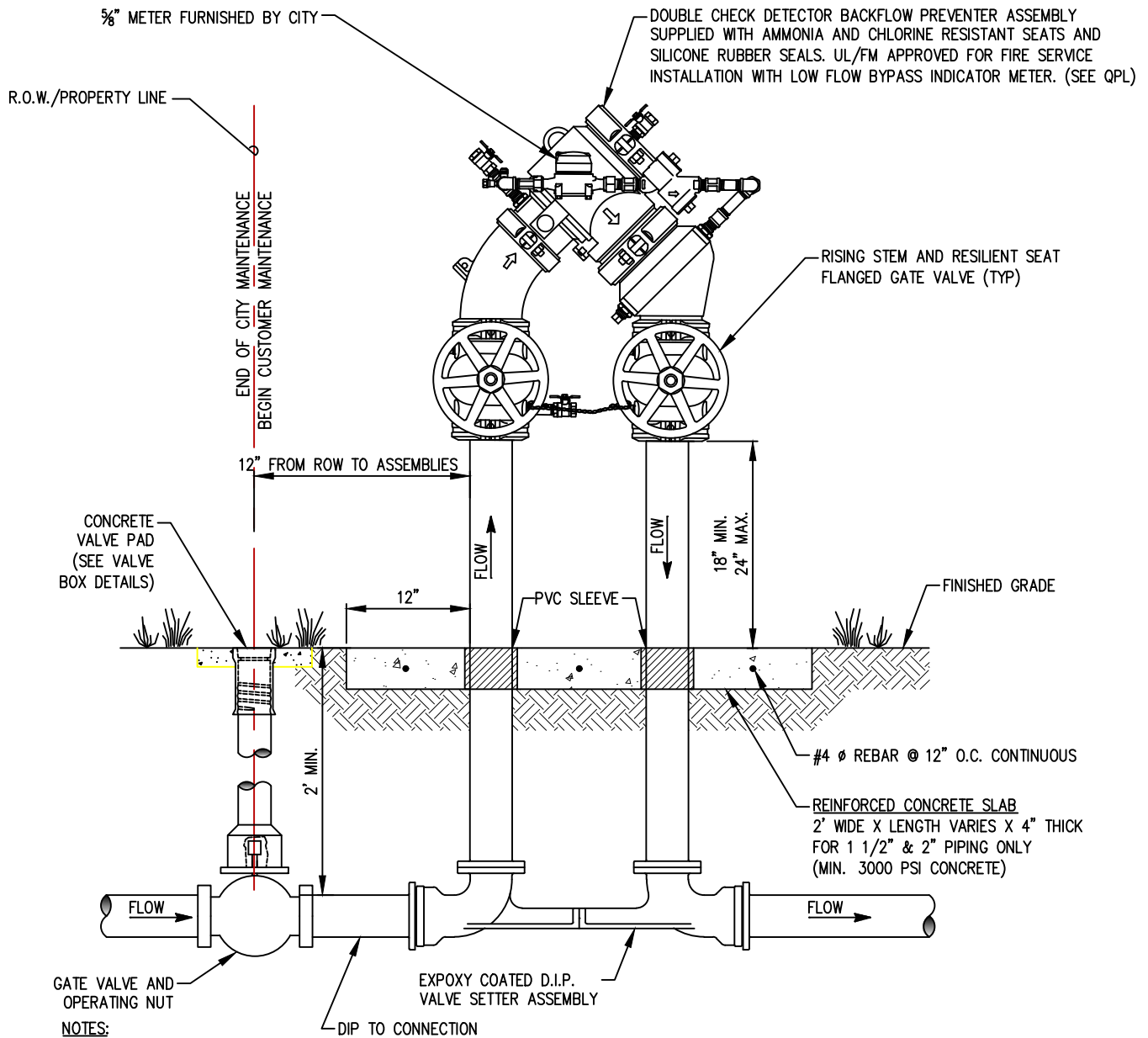
REVISION DATE
07-14-2022
ADOPTION DATE
08-17-2022



CITY OF CAPE CORAL
UTILITIES DEPARTMENT
P.O. BOX 150027
CAPE CORAL, FLORIDA 33915-0027

DETAIL NAME
3" AND UP STANDARD FIRE LINE ASSEMBLY DOUBLE CHECK DETECTOR BACKFLOW PREVENTER ASSEMBLY

DETAIL NO.
W-243



1. ALL ABOVE GROUND PIPE SHALL BE FLANGED END DUCTILE IRON PIPE, PRESSURE CLASS 350. ALL NUTS AND BOLTS SHALL BE AMERICAN MADE 316 STAINLESS STEEL.
2. INSPECTIONS ARE REQUIRED FOR SYSTEM TIE-IN CONNECTION, ASSEMBLY CONNECTION, AND BACKFLOW CERTIFICATION.
3. A FIRE LINE ACCOUNT MUST BE SET UP THROUGH CUSTOMER BILLING SERVICES AND INSTALLATION OF A CITY ISSUED 5/8" METER, PRIOR TO FLUSHING AND ACTIVATION.
4. THIS ASSEMBLY SHALL BE PAINTED WITH EPOXY RED IN ACCORDANCE WITH SECTION 09800 OF THE CITY OF CAPE CORAL TECHNICAL SPECIFICATIONS.
5. A REDUCED PRESSURE DETECTOR BACKFLOW ASSEMBLY SHALL BE USED WHEN HIGH HAZARDS, AS DEFINED BY AWWA M-14 (e.g., RISK OF CHEMICAL ADDITION, MEDICAL FACILITIES, INDUSTRIAL FACILITIES, PROPERTIES USING RECLAIMED WATER, ETC.), EXIST.
6. FOR PRODUCTS AND MATERIALS SEE THE PROJECT SPECIFICATIONS AND THE CITY OF CAPE CORAL QUALIFIED PRODUCTS LIST.
7. PRIOR TO INSTALLATION, LOCATION OF FIRE LINE ASSEMBLY TO BE VERIFIED BY CITY OF CAPE CORAL.

W-244 **4" AND UP COMPACT FIRE LINE ASSEMBLY DOUBLE
CHECK DETECTOR BACKFLOW PREVENTER ASSEMBLY**
NOT TO SCALE

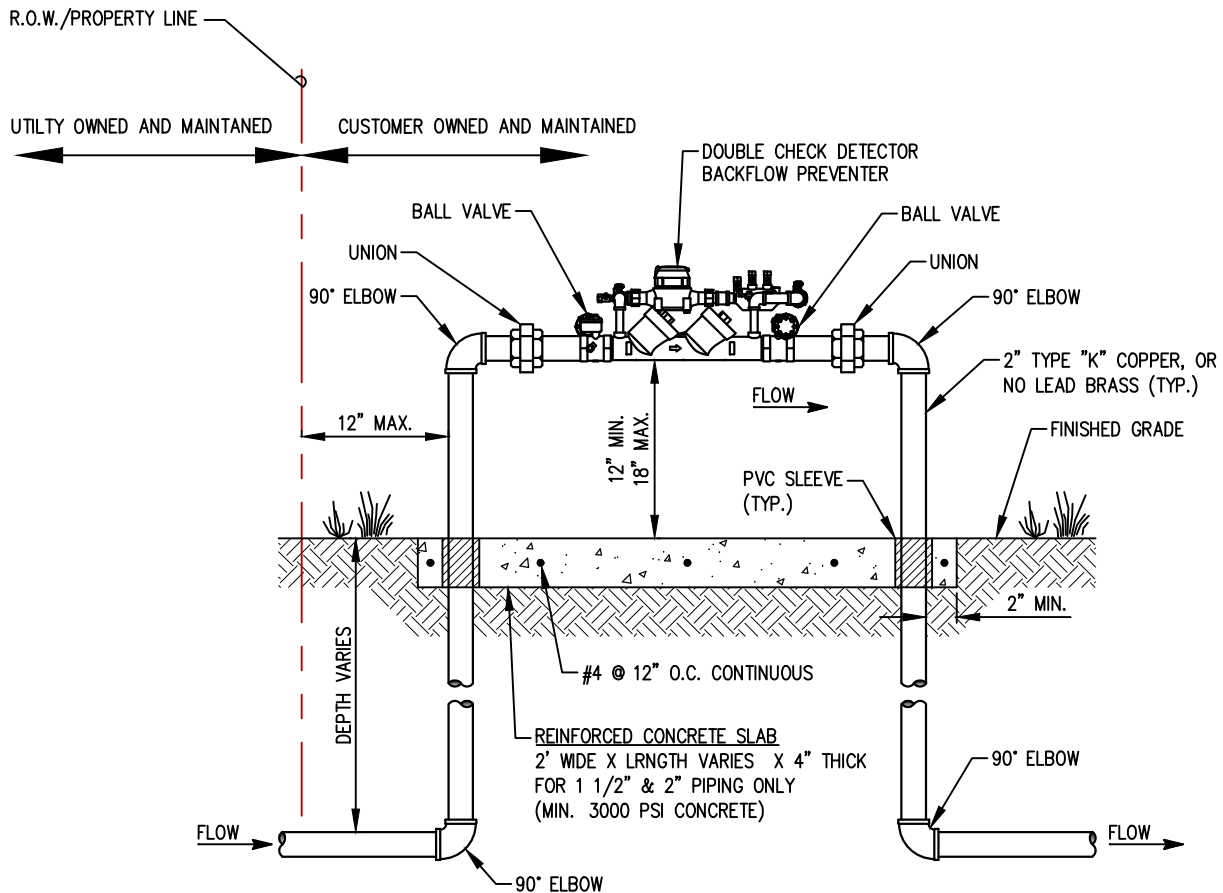
REVISION DATE
07-14-2022
ADOPTION DATE
08-17-2022



CITY OF CAPE CORAL
UTILITIES DEPARTMENT
P.O. BOX 150027
CAPE CORAL, FLORIDA 33915-0027

DETAIL NAME
**4" AND UP COMPACT FIRE LINE
ASSEMBLY DOUBLE CHECK DETECTOR
BACKFLOW PREVENTER ASSEMBLY**

DETAIL NO.
W-244



NOTES:

1. ALL PIPE MUST BE TYPE 'K' COPPER OR NO LEAD BRASS ONLY. PVC NOT PERMITTED.
2. INSPECTIONS ARE REQUIRED FOR SYSTEM TIE-IN CONNECTION, ASSEMBLY CONNECTION, AND BACKFLOW CERTIFICATION.
3. A FIRE LINE ACCOUNT MUST BE SET UP THROUGH CUSTOMER BILLING SERVICES AND INSTALLATION OF A CITY ISSUED $\frac{5}{8}$ " METER, PRIOR TO FLUSHING AND ACTIVATION.
4. THIS ASSEMBLY SHALL BE PAINTED WITH EPOXY RED IN ACCORDANCE WITH SECTION 09800 OF THE CITY OF CAPE CORAL TECHNICAL SPECIFICATIONS.
5. A REDUCED PRESSURE DETECTOR BACKFLOW ASSEMBLY SHALL BE USED WHEN HIGH HAZARDS, AS DEFINED BY AWWA M-14 (e.g., RISK OF CHEMICAL ADDITION, MEDICAL FACILITIES, INDUSTRIAL FACILITIES, PROPERTIES USING RECLAIMED WATER, ETC.), EXIST.
6. FOR PRODUCTS AND MATERIALS SEE THE PROJECT SPECIFICATIONS AND THE CITY OF CAPE CORAL QUALIFIED PRODUCTS LIST.
7. PRIOR TO INSTALLATION, LOCATION OF FIRE LINE ASSEMBLY TO BE VERIFIED BY CITY OF CAPE CORAL.

W-245 2" FIRE LINE ASSEMBLY
DOUBLE CHECK DETECTOR BACKFLOW PREVENTER
NOT TO SCALE

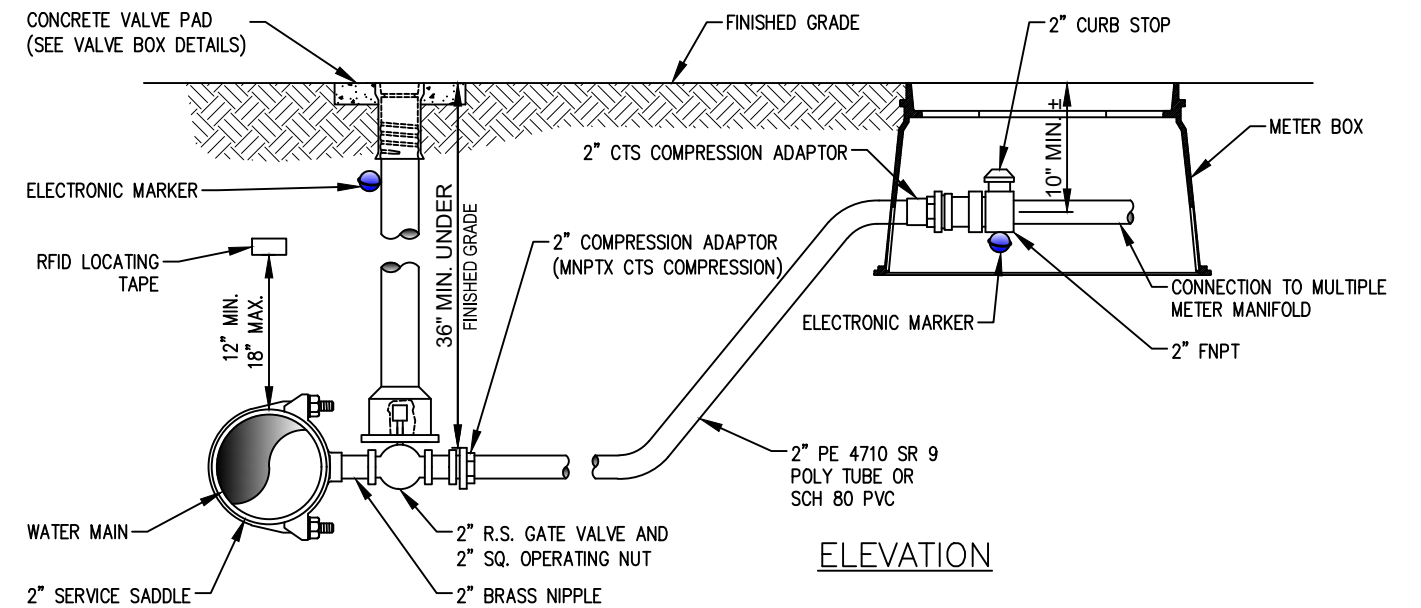
REVISION DATE
07-14-2022
ADOPTION DATE
08-17-2022



CITY OF CAPE CORAL
UTILITIES DEPARTMENT
P.O. BOX 150027
CAPE CORAL, FLORIDA 33915-0027


DETAIL NAME
2" FIRE LINE ASSEMBLY
DOUBLE CHECK DETECTOR
BACKFLOW PREVENTER

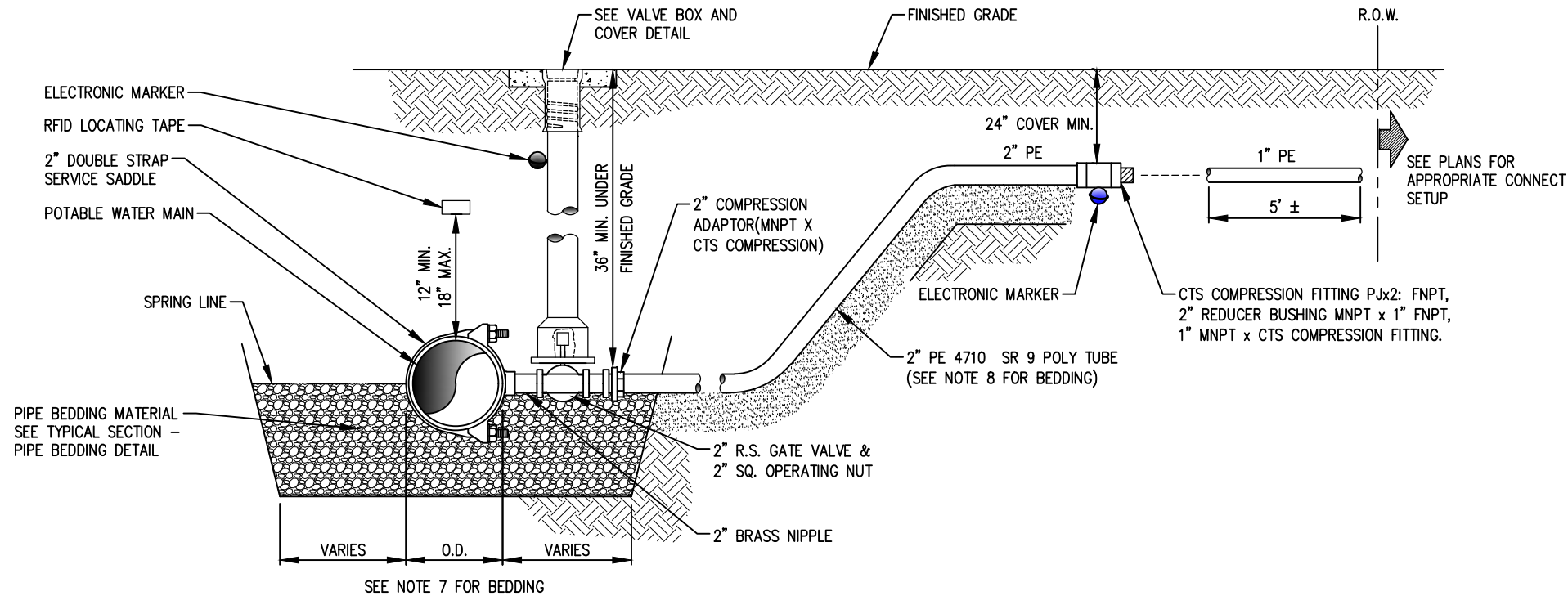
DETAIL NO.
W-245



- NOTES:**
1. SINGLE SERVICES FOR BOTH SHORT AND LONG SIDE SERVICES SHALL BE 2" BLUE PE 4710 ONLY.
 2. FOR INSTALLATIONS WHERE THE SERVICE CONNECTION CROSSES DIVIDED STREETS A MINIMUM 3" SCH 40 PVC CASING SLEEVE WILL BE REQUIRED AND MUST EXTEND CONTINUOUS THROUGH THE MEDIAN AND TERMINATE AT LEAST 1 FOOT PAST THE EDGE OF THE PAVED SURFACE. CASING SLEEVE UNDER THE STREET MAY BE BORED/BULLETED INTO POSITION. A MINIMUM OF 24" (2') COVER TO BE MAINTAINED BETWEEN CASING SLEEVE AND PAVED SURFACE.
 3. ALL CORPORATION AND CURB STOPS SHALL BE COMPRESSION TYPE FITTINGS.
 4. A MINIMUM 18" HORIZONTAL SEPARATION BETWEEN CORPORATION STOPS, SERVICE SADDLES, VALVES, AND/OR FITTINGS SHALL BE MAINTAINED REGARDLESS OF WHICH SIDE OF THE CARRIER PIPE THEY ARE LOCATED ON. ELECTRONIC MARKERS TO BE INSTALLED AT ALL CORPORATION STOPS.
 5. MAINTAIN REQUIRED SEPARATION BETWEEN IRRIGATION AND POTABLE WATER SERVICE PIPING. SEE DETAIL UG-107 AND UG-109.
 6. ALL CURB STOPS SHALL HAVE COLOR CODED TAGS FOR POSITIVE IDENTIFICATION.
 7. SEE TYPICAL SECTION – PIPE BEDDING DETAIL. FULLY SUPPORT SERVICE CONNECTION CORPORATION STOP FITTINGS AND POLY TUBE WITH BEDDING MATERIAL WITHIN THE MAINLINE TRENCH WIDTH. THE METER BOX SHALL HAVE SEDIMENT REMOVED. CURB STOPS WITHIN THE METER BOX SHALL BE ACCESSIBLE AND ON TOP OF THE BEDDING.
 8. REFER TO TYPICAL SECTION SDR 9 POLYETHYLENE SERVICE BEDDING DETAIL FOR BEDDING REQUIREMENTS.
 9. FOR PRODUCTS AND MATERIALS SEE THE PROJECT SPECIFICATIONS AND THE CITY OF CAPE CORAL QUALIFIED PRODUCTS LIST.
 10. FOR SERVICE TAPS LOCATED UNDER PAVEMENT, THE CONTRACTOR SHALL INSTALL AN ELECTRONIC MARKER AT THE CORP STOP.
 11. METER BOXES SHALL NOT BE PROVIDED FOR UNDEVELOPED PROPERTIES UNLESS OTHERWISE INDICATED.

2" MULTIPLE METER MANIFOLD INSTALLATION


REVISION DATE	 <div> CITY OF CAPE CORAL 1981 </div> <div> CITY OF CAPE CORAL UTILITIES DEPARTMENT P.O. BOX 150027 CAPE CORAL, FLORIDA 33915-0027 </div>	DETAIL NAME	DETAIL NO.
07-14-2022		2" MULTIPLE METER MANIFOLD INSTALLATION	W-249
ADOPTION DATE			
08-17-2022			

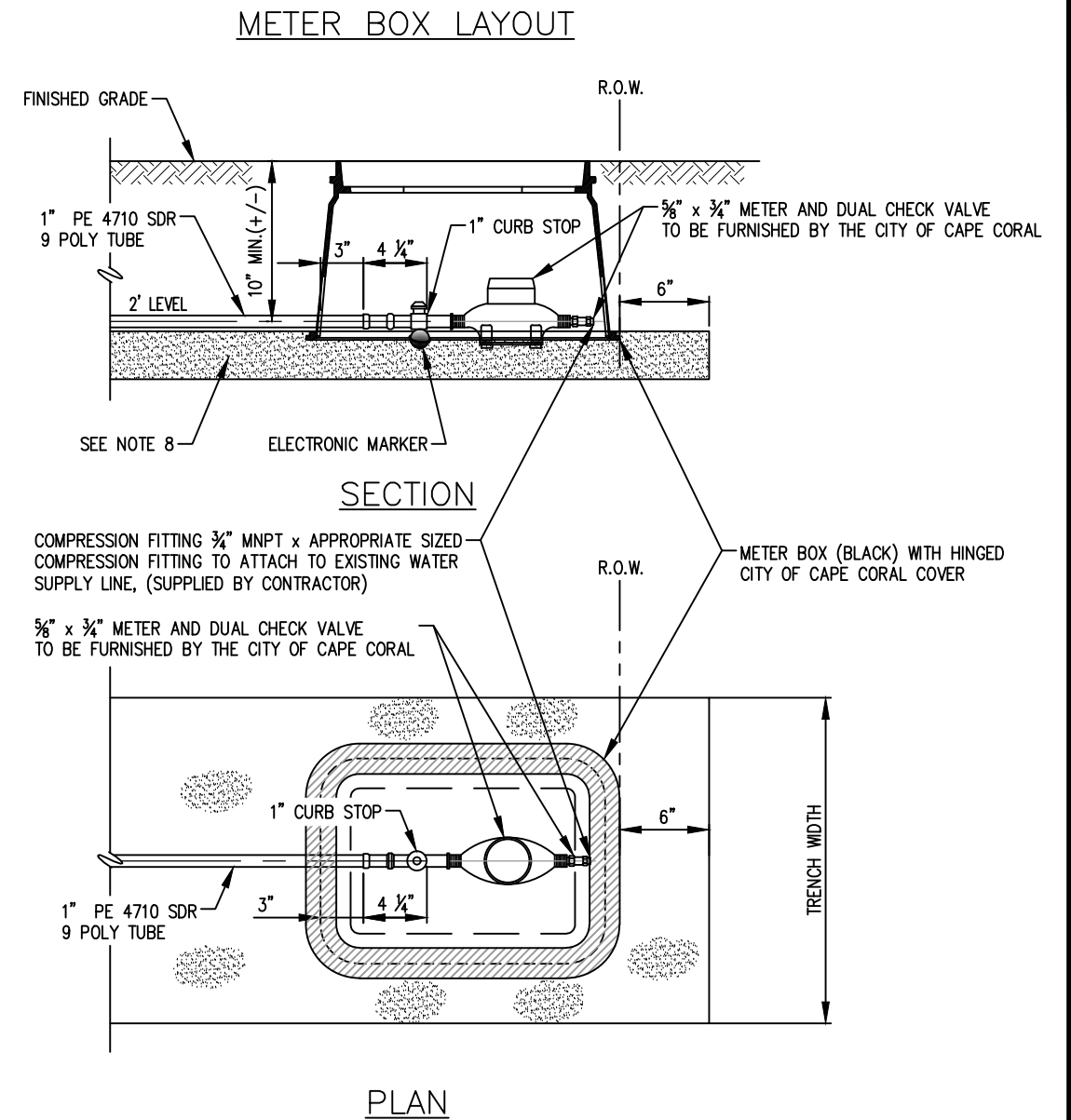
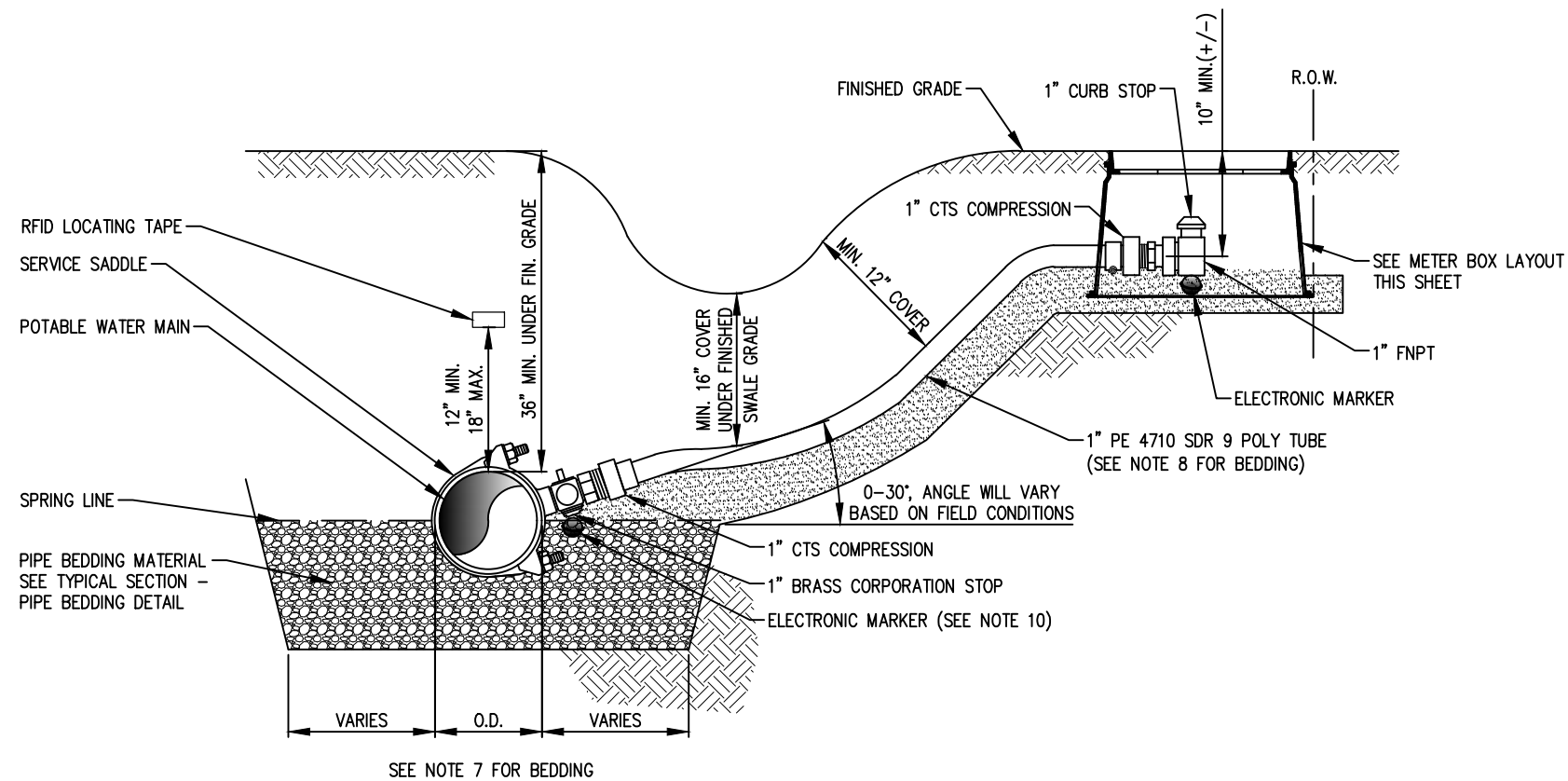


NOTES:

1. SINGLE SERVICES FOR BOTH SHORT AND LONG SIDE SERVICES SHALL BE 1" BLUE PE 4710 ONLY.
2. FOR INSTALLATIONS WHERE THE SERVICE CONNECTION CROSSES DIVIDED STREETS A MINIMUM 2" SCH 40 PVC CASING SLEEVE WILL BE REQUIRED AND MUST EXTEND CONTINUOUS THROUGH THE MEDIAN AND TERMINATE AT LEAST 1 FOOT PAST THE EDGE OF THE PAVED SURFACE. CASING SLEEVE UNDER THE STREET MAY BE BORED/BULLETED INTO POSITION. A MINIMUM OF 24" (2') COVER TO BE MAINTAINED BETWEEN CASING SLEEVE AND PAVED SURFACE.
3. ALL CORPORATION AND CURB STOPS SHALL BE COMPRESSION TYPE FITTINGS.
4. A MINIMUM 18" HORIZONTAL SEPARATION BETWEEN CORPORATION STOPS, SERVICE SADDLES, VALVES, AND/OR FITTINGS SHALL BE MAINTAINED REGARDLESS OF WHICH SIDE OF THE CARRIER PIPE THEY ARE LOCATED ON. ELECTRONIC MARKERS TO BE INSTALLED AT ALL CORPORATION STOPS.
5. MAINTAIN REQUIRED SEPARATION BETWEEN IRRIGATION AND POTABLE WATER SERVICE PIPING. SEE DETAILS UG-107 AND UG-109.
6. ALL CURB STOPS SHALL HAVE COLOR CODED TAGS FOR POSITIVE IDENTIFICATION.
7. SEE TYPICAL SECTION - PIPE BEDDING DETAIL. FULLY SUPPORT SERVICE CONNECTION CORPORATION STOP FITTINGS AND POLY TUBE WITH BEDDING MATERIAL WITHIN THE MAINLINE TRENCH WIDTH.
8. REFER TO TYPICAL SECTION SDR 9 POLYETHYLENE SERVICE BEDDING DETAIL FOR BEDDING REQUIREMENTS.
9. FOR PRODUCTS AND MATERIALS SEE THE PROJECT SPECIFICATIONS AND THE CITY OF CAPE CORAL QUALIFIED PRODUCTS LIST.
10. FOR SERVICE TAPS LOCATED UNDER PAVEMENT, THE CONTRACTOR SHALL INSTALL AN ELECTRONIC MARKER AT THE GATE VALVE.
11. METER BOXES SHALL NOT BE PROVIDED FOR UNDEVELOPED PROPERTIES UNLESS OTHERWISE INDICATED.
12. INSTALL RFID LOCATING TAPE PER MANUFACTURER'S INSTRUCTIONS.

W-250 **2" TO 1" LONG RUN POTABLE WATER RESIDENTIAL SERVICE CONNECTION**
NOT TO SCALE

REVISION DATE	 CITY OF CAPE CORAL UTILITIES DEPARTMENT P.O. BOX 150027 CAPE CORAL, FLORIDA 33915-0027	DETAIL NAME	DETAIL NO.
07-14-2022		2" TO 1" LONG RUN POTABLE WATER RESIDENTIAL SERVICE CONNECTION	W-250
ADOPTION DATE			
08-17-2022			




NOTES:

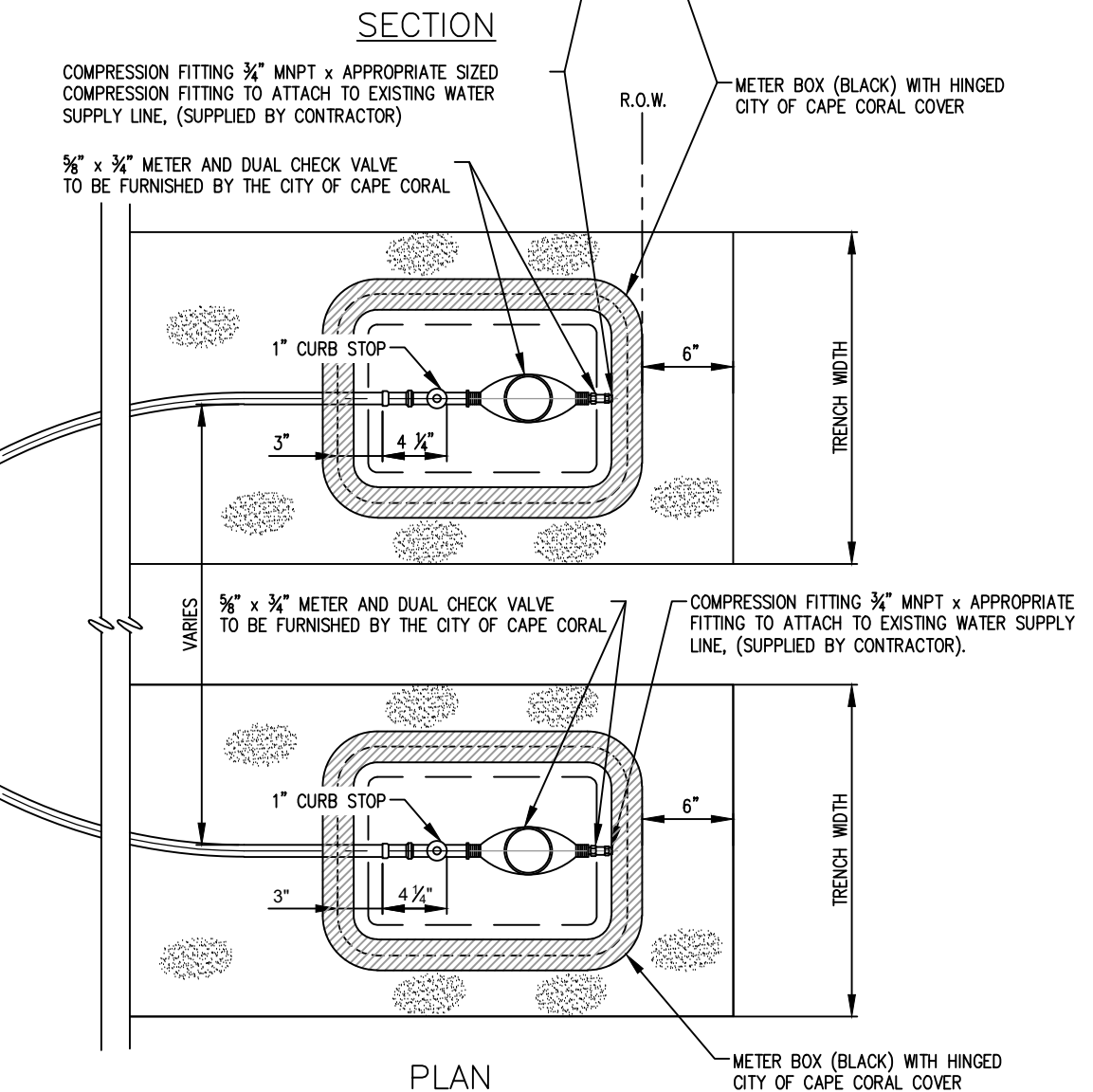
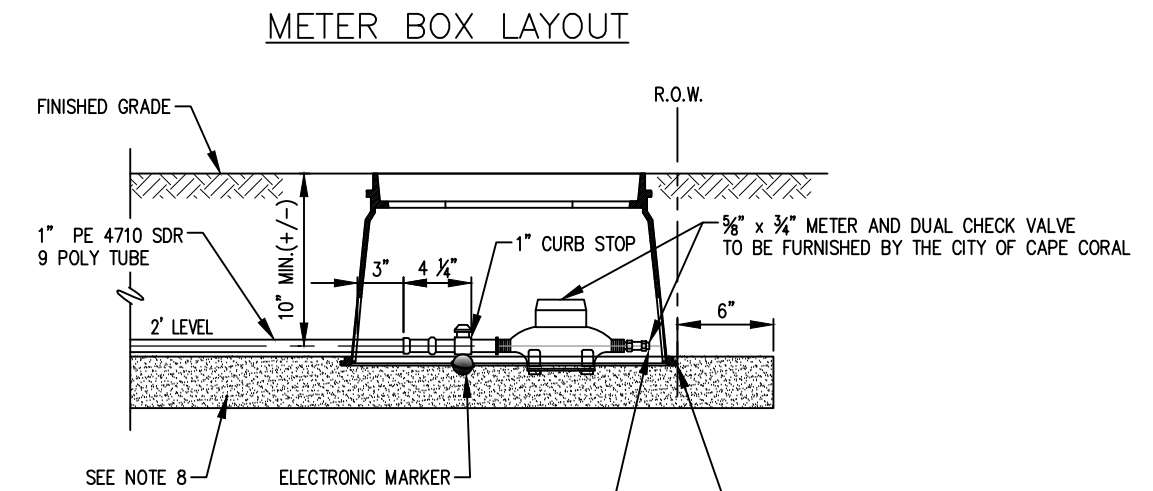
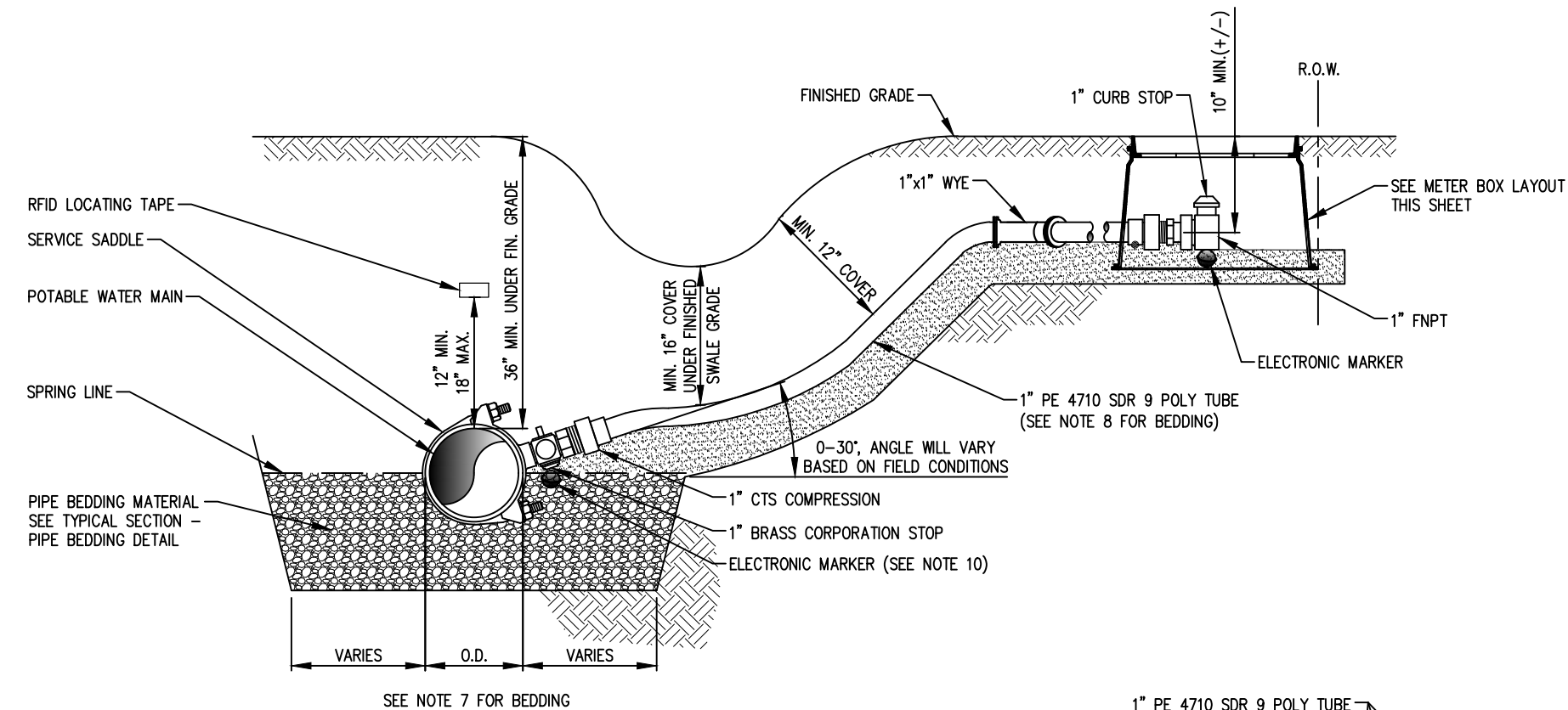
1. SINGLE SERVICES FOR BOTH SHORT AND LONG SIDE SERVICES SHALL BE 1" BLUE PE 4710 ONLY.
2. FOR INSTALLATIONS WHERE THE SERVICE CONNECTION CROSSES DIVIDED STREETS A MINIMUM 2" SCH 40 PVC CASING SLEEVE WILL BE REQUIRED AND MUST EXTEND CONTINUOUS THROUGH THE MEDIAN AND TERMINATE AT LEAST 1 FOOT PAST THE EDGE OF THE PAVED SURFACE. CASING SLEEVE UNDER THE STREET MAY BE BORED/BULLETED INTO POSITION. A MINIMUM OF 24" (2') COVER TO BE MAINTAINED BETWEEN CASING SLEEVE AND PAVED SURFACE.
3. ALL CORPORATION AND CURB STOPS SHALL BE COMPRESSION TYPE FITTINGS.
4. A MINIMUM 18" HORIZONTAL SEPARATION BETWEEN CORPORATION STOPS, SERVICE SADDLES, VALVES, AND/OR FITTINGS SHALL BE MAINTAINED REGARDLESS OF WHICH SIDE OF THE CARRIER PIPE THEY ARE LOCATED ON. ELECTRONIC MARKERS TO BE INSTALLED AT ALL CORPORATION STOPS.
5. MAINTAIN REQUIRED SEPARATION BETWEEN IRRIGATION AND POTABLE WATER SERVICE PIPING. SEE DETAILS UG-107 AND UG-109.
6. ALL CURB STOPS SHALL HAVE COLOR CODED TAGS FOR POSITIVE IDENTIFICATION.
7. SEE TYPICAL SECTION - PIPE BEDDING DETAIL. FULLY SUPPORT SERVICE CONNECTION CORPORATION STOP FITTINGS AND POLY TUBE WITH BEDDING MATERIAL WITHIN THE MAINLINE TRENCH WIDTH. THE METER BOX SHALL HAVE SEDIMENT REMOVED. CURB STOPS WITHIN THE METER BOX SHALL BE ACCESSIBLE AND ON TOP OF THE BEDDING.
8. REFER TO TYPICAL SECTION SDR 9 POLYETHYLENE SERVICE BEDDING DETAIL FOR BEDDING REQUIREMENTS.
9. FOR PRODUCTS AND MATERIALS SEE THE PROJECT SPECIFICATIONS AND THE CITY OF CAPE CORAL QUALIFIED PRODUCTS LIST.
10. FOR SERVICE TAPS LOCATED UNDER PAVEMENT, THE CONTRACTOR SHALL INSTALL AN ELECTRONIC MARKER AT THE CORP STOP.
11. METER BOXES SHALL NOT BE PROVIDED FOR UNDEVELOPED PROPERTIES UNLESS OTHERWISE INDICATED.
12. INSTALL RFID LOCATING TAPE PER MANUFACTURER'S INSTRUCTIONS.

W-251

1" POTABLE WATER (SHORT & LONG SIDE) RESIDENTIAL SINGLE SERVICE CONNECTION - IMPROVED PROPERTY

NOT TO SCALE

REVISION DATE	 CITY OF CAPE CORAL UTILITIES DEPARTMENT P.O. BOX 150027 CAPE CORAL, FLORIDA 33915-0027	DETAIL NAME	DETAIL NO.
07-14-2022		1" POTABLE WATER (SHORT & LONG SIDE) RESIDENTIAL SINGLE SERVICE CONNECTION IMPROVED PROPERTY	W-251
ADOPTION DATE			
08-17-2022			



NOTES:

1. SINGLE SERVICES FOR BOTH SHORT AND LONG SIDE SERVICES SHALL BE 1" BLUE PE 4710 ONLY.
2. FOR INSTALLATIONS WHERE THE SERVICE CONNECTION CROSSES DIVIDED STREETS A MINIMUM 2" SCH 40 PVC CASING SLEEVE WILL BE REQUIRED AND MUST EXTEND CONTINUOUS THROUGH THE MEDIAN AND TERMINATE AT LEAST 1 FOOT PAST THE EDGE OF THE PAVED SURFACE. CASING SLEEVE UNDER THE STREET MAY BE BORED/BULLETED INTO POSITION. A MINIMUM OF 24" (2') COVER TO BE MAINTAINED BETWEEN CASING SLEEVE AND PAVED SURFACE.
3. ALL CORPORATION AND CURB STOPS SHALL BE COMPRESSION TYPE FITTINGS.
4. A MINIMUM 18" HORIZONTAL SEPARATION BETWEEN CORPORATION STOPS, SERVICE SADDLES, VALVES, AND/OR FITTINGS SHALL BE MAINTAINED REGARDLESS OF WHICH SIDE OF THE CARRIER PIPE THEY ARE LOCATED ON. ELECTRONIC MARKERS TO BE INSTALLED AT ALL CORPORATION STOPS.
5. MAINTAIN REQUIRED SEPARATION BETWEEN IRRIGATION AND POTABLE WATER SERVICE PIPING. SEE DETAILS UG-107 AND UG-109.
6. ALL CURB STOPS SHALL HAVE COLOR CODED TAGS FOR POSITIVE IDENTIFICATION.
7. SEE TYPICAL SECTION - PIPE BEDDING DETAIL. FULLY SUPPORT SERVICE CONNECTION CORPORATION STOP FITTINGS AND POLY TUBE WITH BEDDING MATERIAL WITHIN THE MAINLINE TRENCH WIDTH. THE METER BOX SHALL HAVE SEDIMENT REMOVED. CURB STOPS WITHIN THE METER BOX SHALL BE ACCESSIBLE AND ON TOP OF THE BEDDING.
8. REFER TO TYPICAL SECTION SDR 9 POLYETHYLENE SERVICE BEDDING DETAIL FOR BEDDING REQUIREMENTS.
9. FOR PRODUCTS AND MATERIALS SEE THE PROJECT SPECIFICATIONS AND THE CITY OF CAPE CORAL QUALIFIED PRODUCTS LIST.
10. FOR SERVICE TAPS LOCATED UNDER PAVEMENT, THE CONTRACTOR SHALL INSTALL AN ELECTRONIC MARKER AT THE CORP STOP.
11. METER BOXES SHALL NOT BE PROVIDED FOR UNDEVELOPED PROPERTIES UNLESS OTHERWISE INDICATED.
12. INSTALL RFID LOCATING TAPE PER MANUFACTURER'S INSTRUCTIONS.

W-253

1" POTABLE WATER (LONG SIDE) RESIDENTIAL DOUBLE (WHIP) SERVICE CONNECTION - IMPROVED PROPERTY
NOT TO SCALE

REVISION DATE
07-14-2022
ADOPTION DATE
08-17-2022



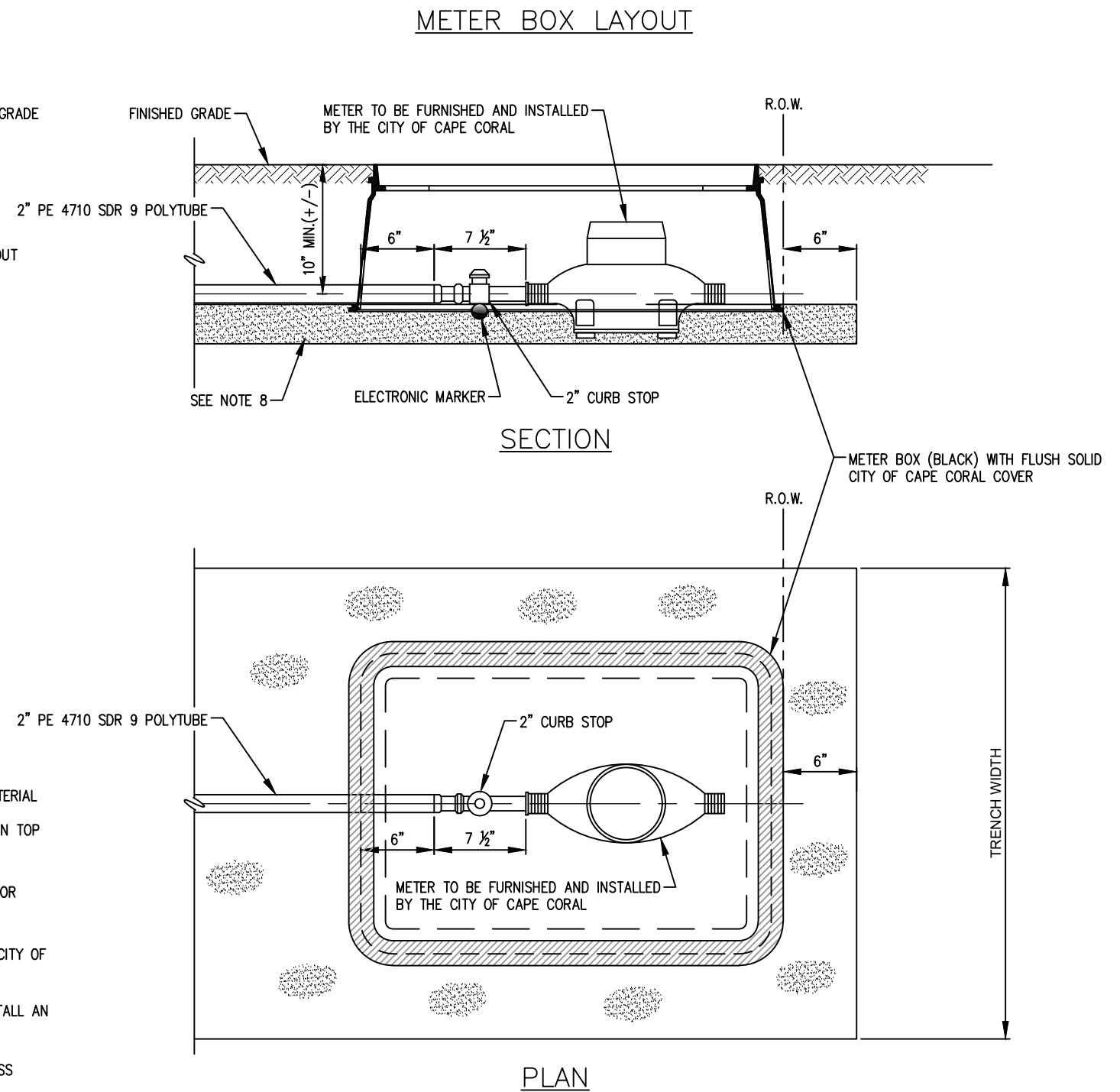
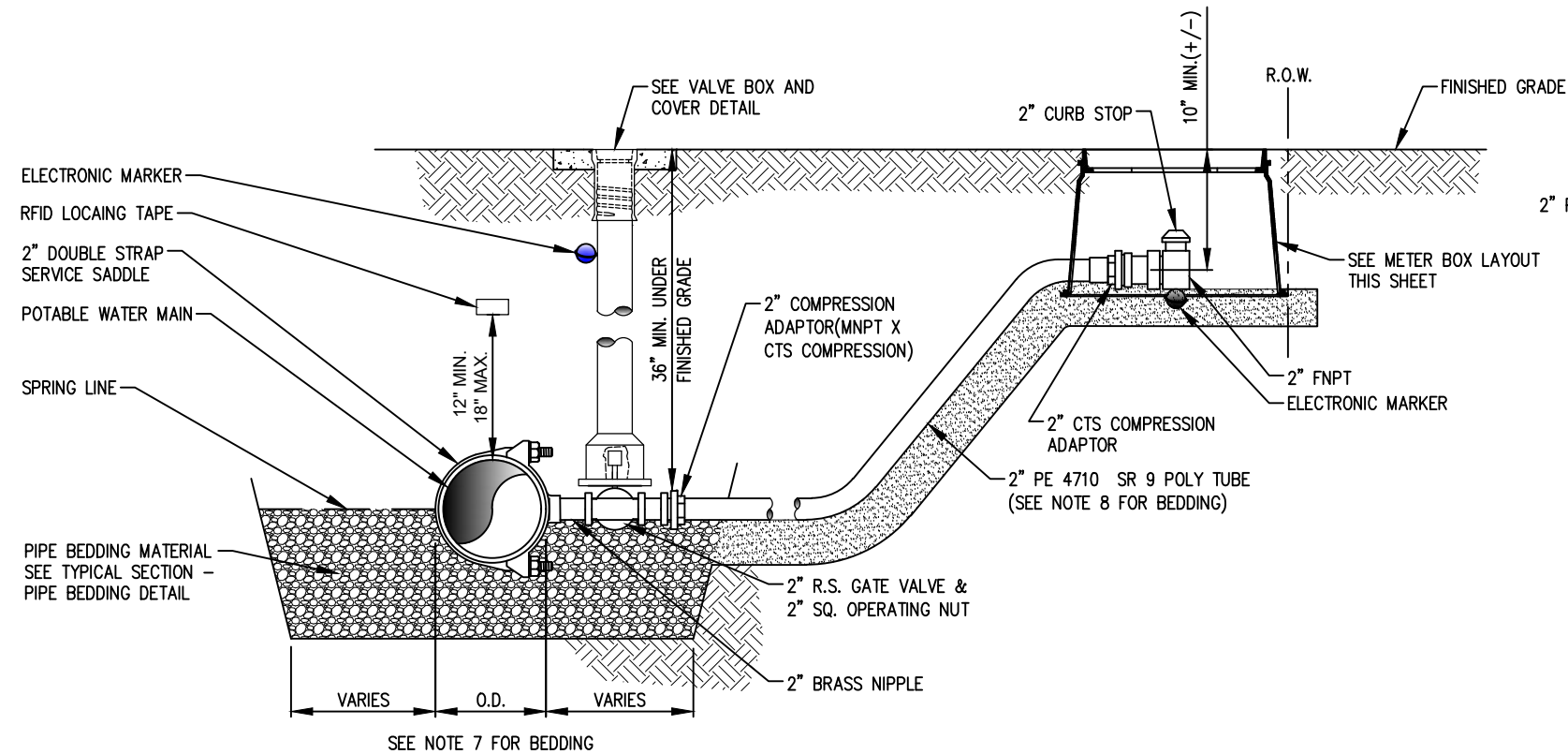
CITY OF CAPE CORAL
UTILITIES DEPARTMENT
P.O. BOX 150027
CAPE CORAL, FLORIDA 33915-0027

DETAIL NAME

1" POTABLE WATER (LONG SIDE)
RESIDENTIAL DOUBLE (WHIP) SERVICE
CONNECTION - IMPROVED PROPERTY

DETAIL NO.

W-253



NOTES:

1. SINGLE SERVICES FOR BOTH SHORT AND LONG SIDE SERVICES SHALL BE 2" BLUE PE 4710 ONLY.
2. FOR INSTALLATIONS WHERE THE SERVICE CONNECTION CROSSES DIVIDED STREETS A MINIMUM 3" SCH 40 PVC CASING SLEEVE WILL BE REQUIRED AND MUST EXTEND CONTINUOUS THROUGH THE MEDIAN AND TERMINATE AT LEAST 1 FOOT PAST THE EDGE OF THE PAVED SURFACE. CASING SLEEVE UNDER THE STREET MAY BE BORED/BULLETED INTO POSITION. A MINIMUM OF 24" (2') COVER TO BE MAINTAINED BETWEEN CASING SLEEVE AND PAVED SURFACE.
3. ALL CORPORATION AND CURB STOPS SHALL BE COMPRESSION TYPE FITTINGS.
4. A MINIMUM 18" HORIZONTAL SEPARATION BETWEEN CORPORATION STOPS, SERVICE SADDLES, VALVES, AND/OR FITTINGS SHALL BE MAINTAINED REGARDLESS OF WHICH SIDE OF THE CARRIER PIPE THEY ARE LOCATED ON. ELECTRONIC MARKERS TO BE INSTALLED AT ALL CORPORATION STOPS.
5. MAINTAIN REQUIRED SEPARATION BETWEEN IRRIGATION AND POTABLE WATER SERVICE PIPING. SEE DETAIL UG-107 AND UG-109.
6. ALL CURB STOPS SHALL HAVE COLOR CODED TAGS FOR POSITIVE IDENTIFICATION.
7. SEE TYPICAL SECTION - PIPE BEDDING DETAIL. FULLY SUPPORT SERVICE CONNECTION CORPORATION STOP FITTINGS AND POLY TUBE WITH BEDDING MATERIAL WITHIN THE MAINLINE TRENCH WIDTH. THE METER BOX SHALL HAVE SEDIMENT REMOVED. CURB STOPS WITHIN THE METER BOX SHALL BE ACCESSIBLE AND ON TOP OF THE BEDDING.
8. REFER TO TYPICAL SECTION SDR 9 POLYETHYLENE SERVICE BEDDING DETAIL FOR BEDDING REQUIREMENTS.
9. FOR PRODUCTS AND MATERIALS SEE THE PROJECT SPECIFICATIONS AND THE CITY OF CAPE CORAL QUALIFIED PRODUCTS LIST.
10. FOR SERVICE TAPS LOCATED UNDER PAVEMENT, THE CONTRACTOR SHALL INSTALL AN ELECTRONIC MARKER AT THE CORP STOP.
11. METER BOXES SHALL NOT BE PROVIDED FOR UNDEVELOPED PROPERTIES UNLESS OTHERWISE INDICATED.
12. INSTALL RFID LOCATING TAPE PER MANUFACTURER'S INSTRUCTIONS.

W-255

2" POTABLE WATER (SHORT & LONG SIDE) COMMERCIAL/MULTI-FAMILY SINGLE SERVICE CONNECTION - HDPE -OPTION - IMPROVED PROPERTY

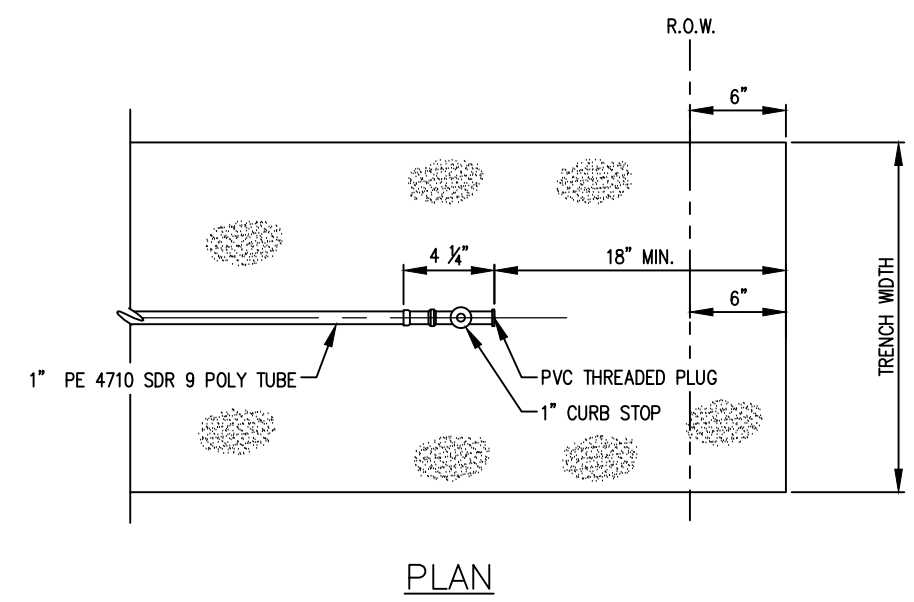
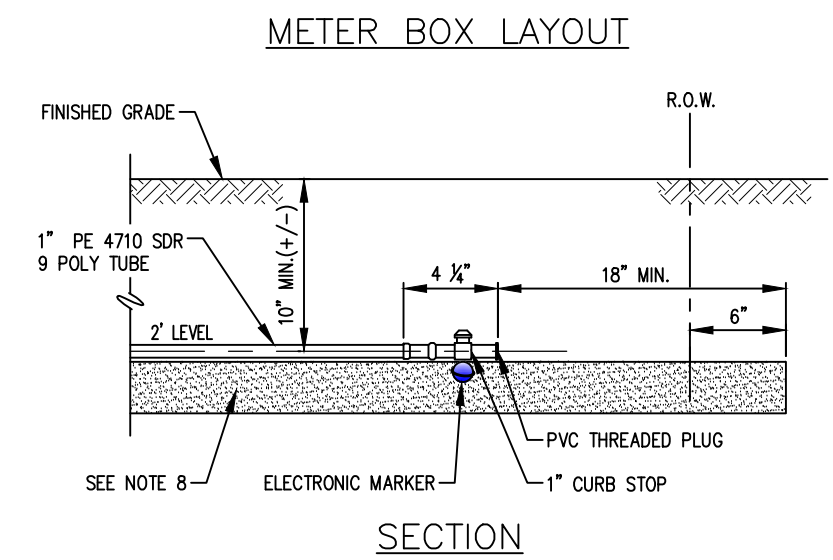
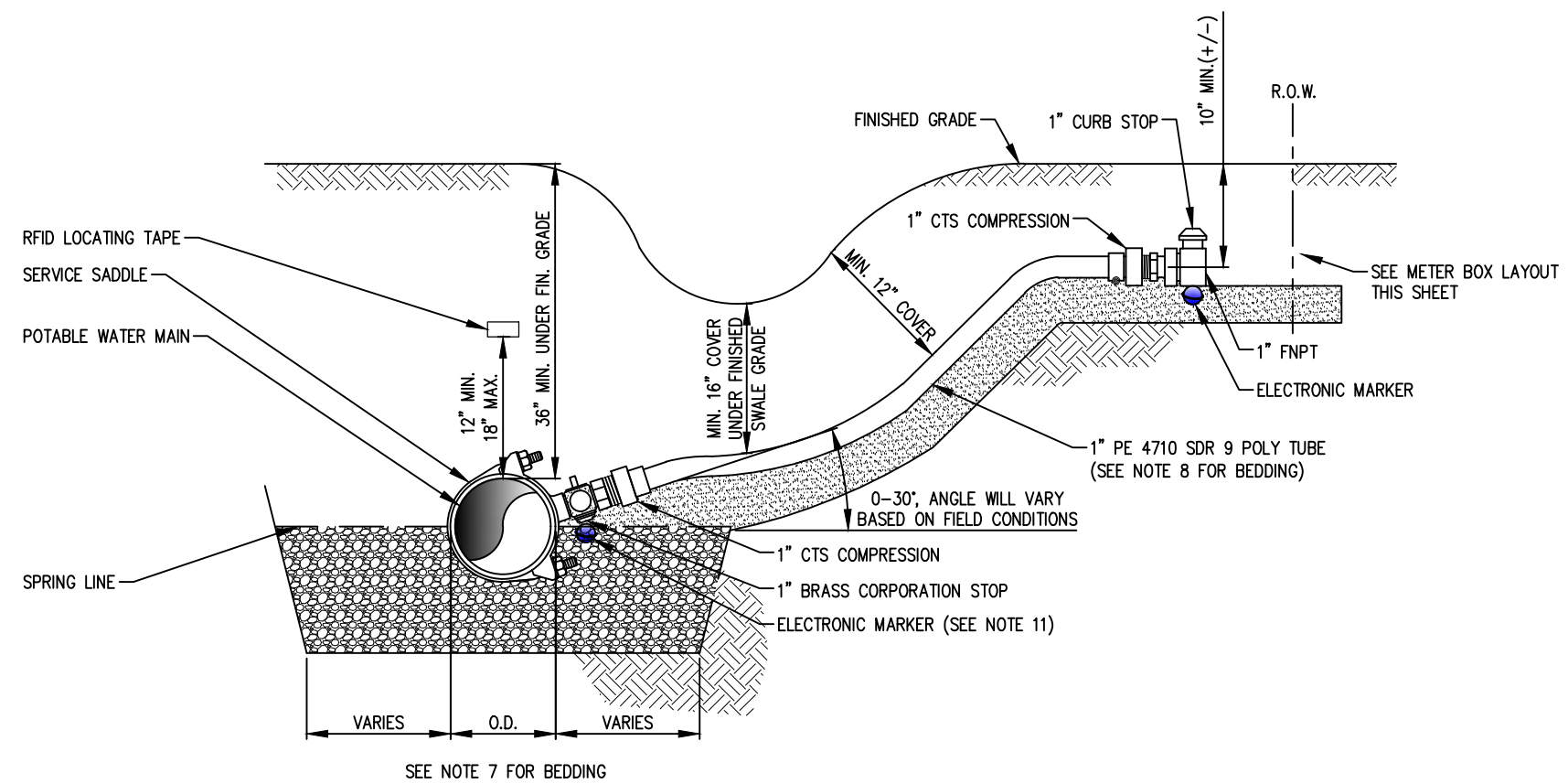
NOT TO SCALE

REVISION DATE
07-14-2022
ADOPTION DATE
08-17-2022



CITY OF CAPE CORAL
UTILITIES DEPARTMENT
P.O. BOX 150027
CAPE CORAL, FLORIDA 33915-0027

DETAIL NAME	DETAIL NO.
2" POTABLE WATER (SHORT & LONG SIDE) COMMERCIAL/MULTI-FAMILY SINGLE SERVICE CONNECTION - HDPE OPTION - IMPROVED PROPERTY	W-255




NOTES:

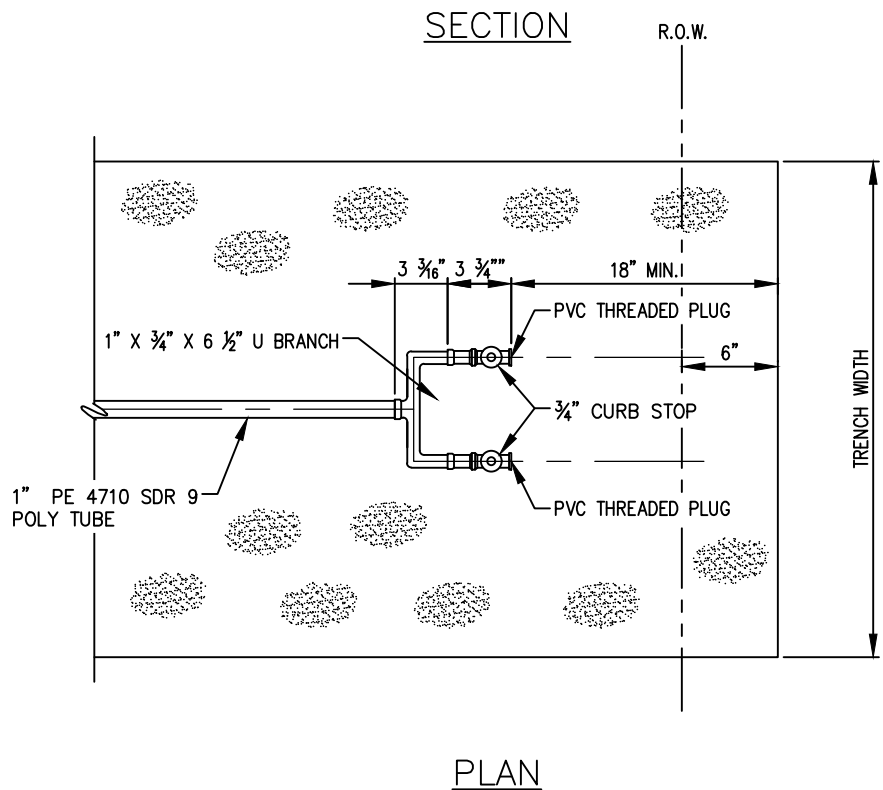
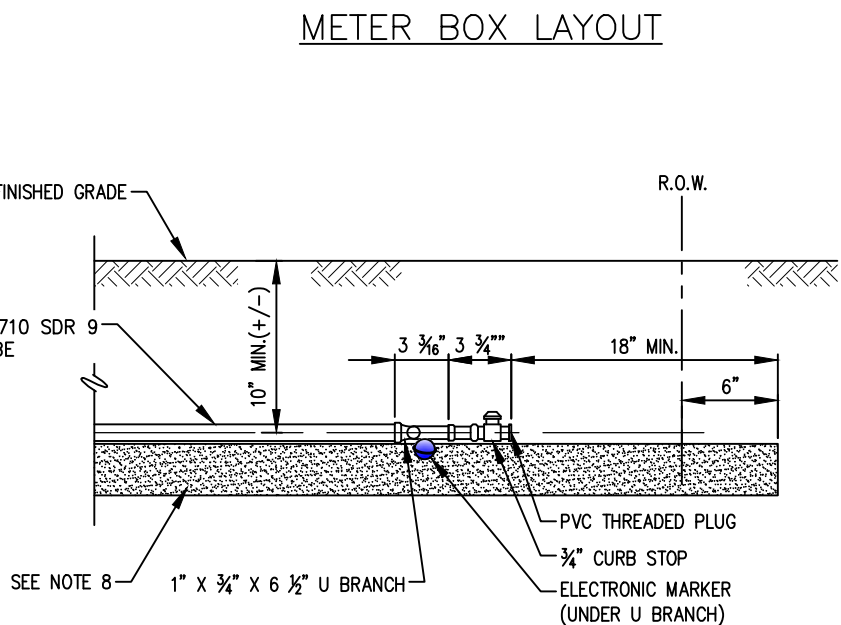
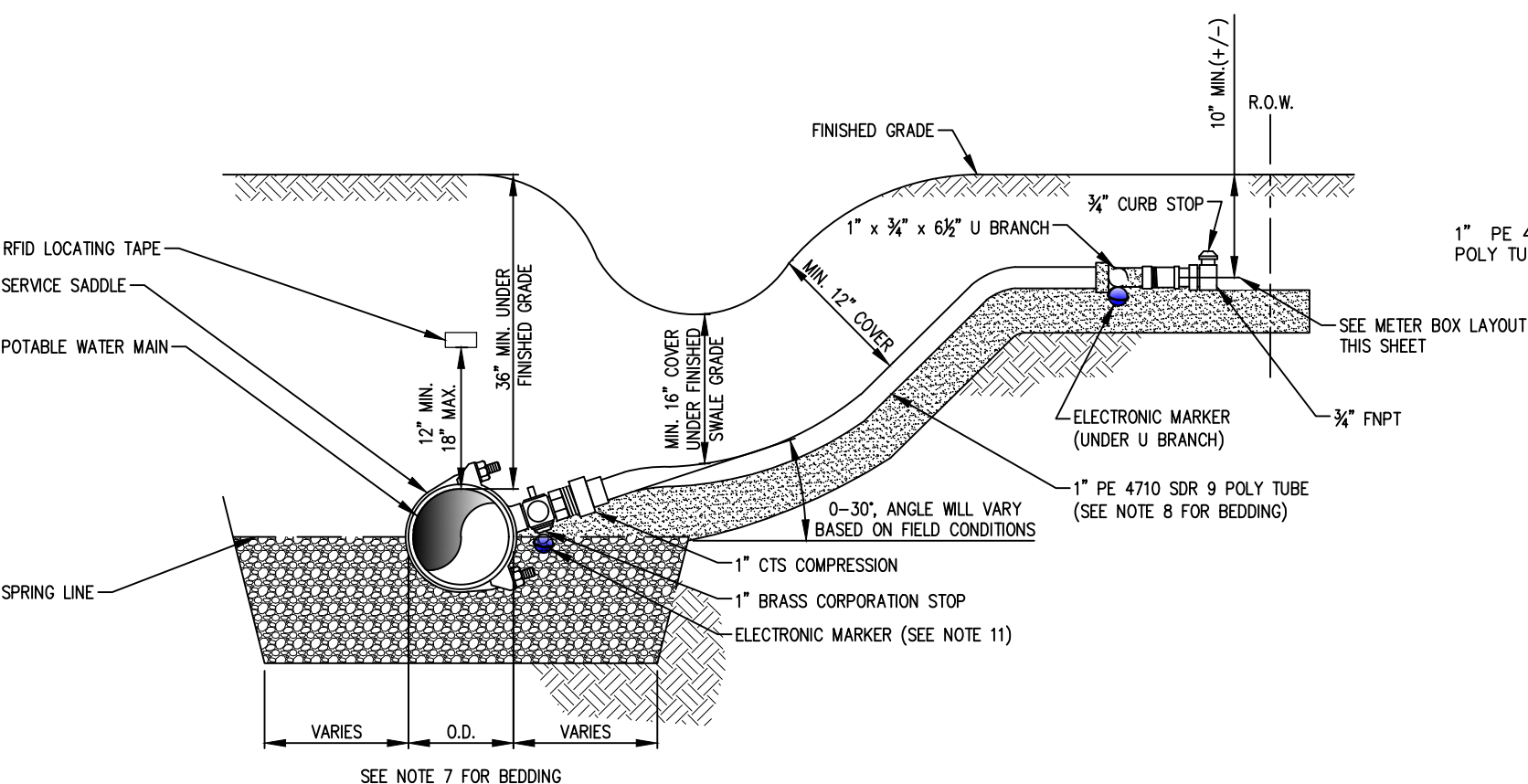
1. SINGLE SERVICES FOR BOTH SHORT AND LONG SIDE SERVICES SHALL BE 1" BLUE PE 4710 ONLY.
2. FOR INSTALLATIONS WHERE THE SERVICE CONNECTION CROSSES DIVIDED STREETS A MINIMUM 2" SCH 40 PVC CASING SLEEVE WILL BE REQUIRED AND MUST EXTEND CONTINUOUS THROUGH THE MEDIAN AND TERMINATE AT LEAST 1 FOOT PAST THE EDGE OF THE PAVED SURFACE. CASING SLEEVE UNDER THE STREET MAY BE BORED/BULLETED INTO POSITION. A MINIMUM OF 30" (2.5') COVER TO BE MAINTAINED BETWEEN CASING SLEEVE AND PAVED SURFACE.
3. ALL CORPORATION AND CURB STOPS SHALL BE COMPRESSION TYPE FITTINGS.
4. A MINIMUM 18" HORIZONTAL SEPARATION BETWEEN CORPORATION STOPS, SERVICE SADDLES, VALVES, AND/OR FITTINGS SHALL BE MAINTAINED REGARDLESS OF WHICH SIDE OF THE CARRIER PIPE THEY ARE LOCATED ON. ELECTRONIC MARKERS TO BE INSTALLED AT ALL CORPORATION STOPS.
5. MAINTAIN REQUIRED SEPARATION BETWEEN IRRIGATION AND POTABLE WATER SERVICE PIPING. SEE DETAILS UG-107 AND UG-109.
6. ALL CURB STOPS SHALL HAVE COLOR CODED TAGS FOR POSITIVE IDENTIFICATION.
7. REFER TO APPLICABLE DRAWINGS AND SPECIFICATIONS FOR PIPE BEDDING REQUIREMENTS. FULLY SUPPORT SERVICE CONNECTION CORPORATION STOP FITTINGS AND POLY TUBE WITH BEDDING MATERIAL WITHIN THE MAINLINE TRENCH WIDTH.
8. REFER TO TYPICAL SECTION SDR 9 POLYETHYLENE POTABLE WATER/IRRIGATION SERVICE BEDDING DETAIL FOR BEDDING REQUIREMENTS.
9. FOR PRODUCTS AND MATERIALS SEE THE PROJECT SPECIFICATIONS AND THE CITY OF CAPE CORAL QUALIFIED PRODUCTS LIST.
10. FOR SERVICE TAPS LOCATED UNDER PAVEMENT, THE CONTRACTOR SHALL INSTALL AN ELECTRONIC MARKER AT THE CORP STOP.
11. METER BOXES SHALL NOT BE PROVIDED FOR UNDEVELOPED PROPERTIES UNLESS OTHERWISE INDICATED.
12. INSTALL RFID LOCATING TAPE PER MANUFACTURER'S INSTRUCTIONS.

W-256

1" POTABLE WATER (SHORT & LONG SIDE) RESIDENTIAL SINGLE SERVICE CONNECTION - UNIMPROVED PROPERTY

NOT TO SCALE

REVISION DATE	 <div> CITY OF CAPE CORAL UTILITIES DEPARTMENT P.O. BOX 150027 CAPE CORAL, FLORIDA 33915-0027 </div>	DETAIL NAME	DETAIL NO.
07-14-2022		1" POTABLE WATER (SHORT & LONG SIDE) RESIDENTIAL SINGLE SERVICE CONNECTION UNIMPROVED PROPERTY	W-256
ADOPTION DATE			
08-17-2022			

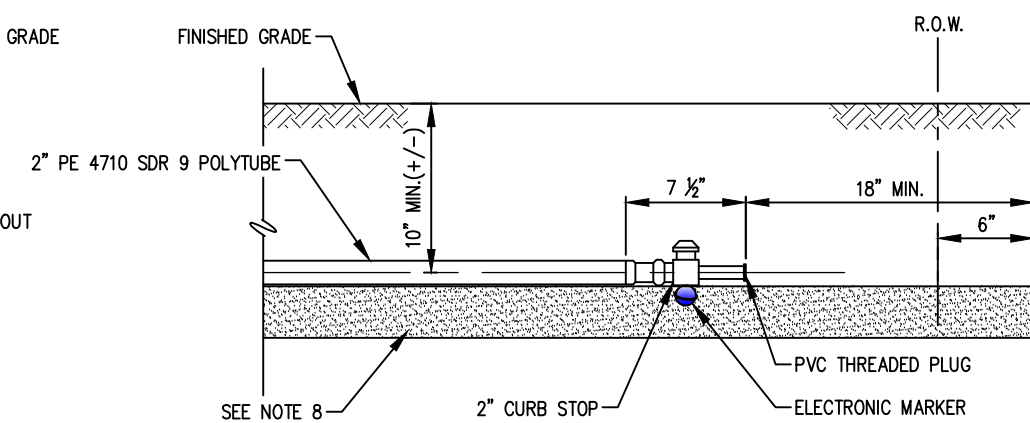
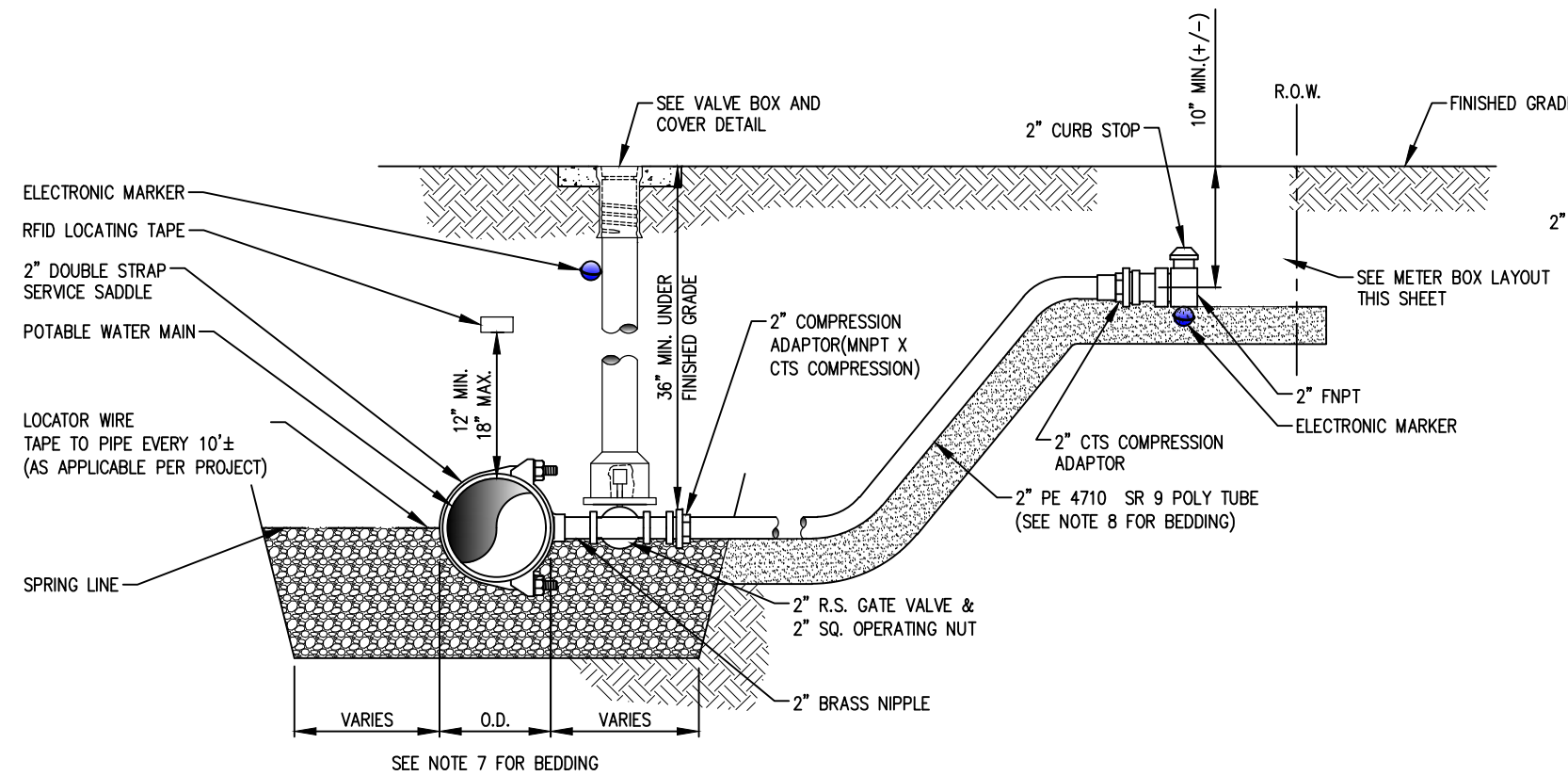


- NOTES:
- SINGLE SERVICES FOR BOTH SHORT AND LONG SIDE SERVICES SHALL BE 1" BLUE PE 4710 ONLY.
 - FOR INSTALLATIONS WHERE THE SERVICE CONNECTION CROSSES DIVIDED STREETS A MINIMUM 2" SCH 40 PVC CASING SLEEVE WILL BE REQUIRED AND MUST EXTEND CONTINUOUS THROUGH THE MEDIAN AND TERMINATE AT LEAST 1 FOOT PAST THE EDGE OF THE PAVED SURFACE. CASING SLEEVE UNDER THE STREET MAY BE BORED/BULLETED INTO POSITION. A MINIMUM OF 24" (2') COVER TO BE MAINTAINED BETWEEN CASING SLEEVE AND PAVED SURFACE.
 - ALL CORPORATION AND CURB STOPS SHALL BE COMPRESSION TYPE FITTINGS.
 - A MINIMUM 18" HORIZONTAL SEPARATION BETWEEN CORPORATION STOPS, SERVICE SADDLES, VALVES, AND/OR FITTINGS SHALL BE MAINTAINED REGARDLESS OF WHICH SIDE OF THE CARRIER PIPE THEY ARE LOCATED ON. ELECTRONIC MARKERS TO BE INSTALLED AT ALL CORPORATION STOPS
 - MAINTAIN REQUIRED SEPARATION BETWEEN IRRIGATION AND POTABLE WATER SERVICE PIPING. SEE DETAILS UG-107 AND UG-109.
 - ALL CURB STOPS SHALL HAVE COLOR CODED TAGS FOR POSITIVE IDENTIFICATION.
 - REFER TO APPLICABLE DRAWINGS AND SPECIFICATIONS FOR PIPE BEDDING REQUIREMENTS. FULLY SUPPORT SERVICE CONNECTION CORPORATION STOP FITTINGS AND POLY TUBE WITH BEDDING MATERIAL WITHIN THE MAINLINE TRENCH WIDTH.
 - REFER TO TYPICAL SECTION SDR 9 POLYETHYLENE POTABLE WATER/IRRIGATION SERVICE BEDDING DETAIL FOR BEDDING REQUIREMENTS.
 - FOR PRODUCTS AND MATERIALS SEE THE PROJECT SPECIFICATIONS AND THE CITY OF CAPE CORAL QUALIFIED PRODUCTS LIST.
 - FOR SERVICE TAPS LOCATED UNDER PAVEMENT, THE CONTRACTOR SHALL INSTALL AN ELECTRONIC MARKER AT THE CORP STOP.
 - METER BOXES SHALL NOT BE PROVIDED FOR UNDEVELOPED PROPERTIES UNLESS OTHERWISE INDICATED.
 - INSTALL RFID LOCATING TAPE PER MANUFACTURER'S INSTRUCTIONS.

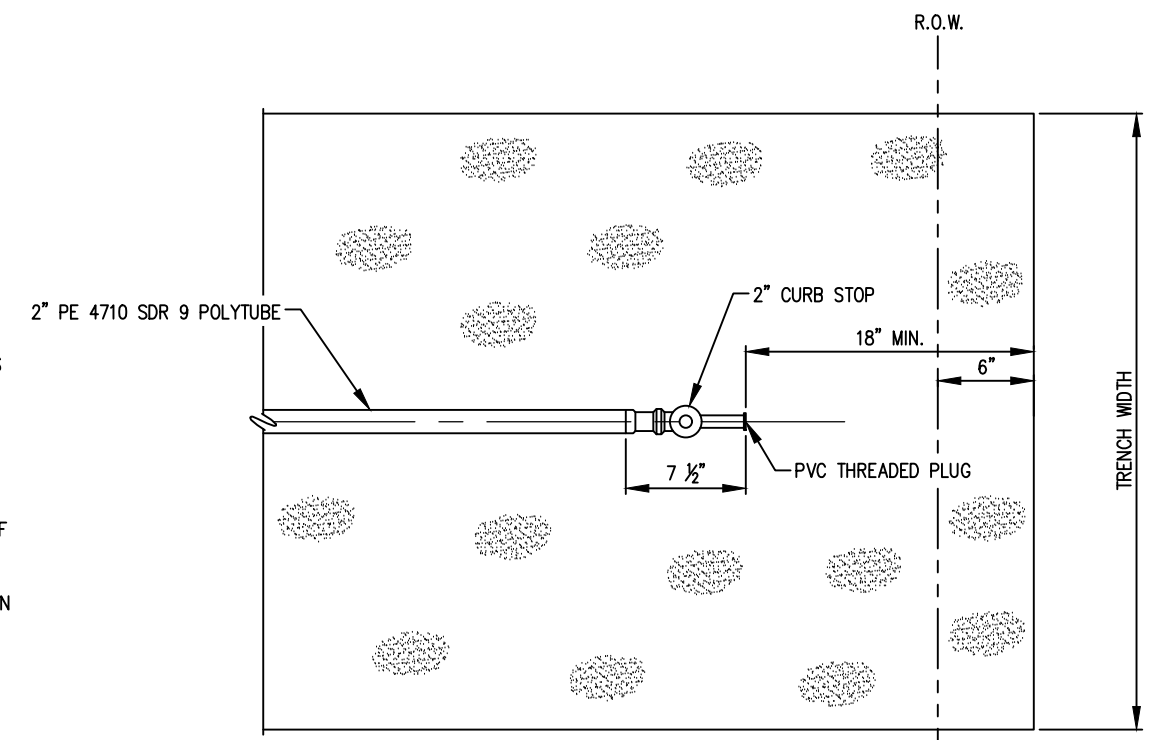
W-257 1" POTABLE WATER (SHORT & LONG SIDE) RESIDENTIAL DOUBLE SERVICE CONNECTION - UNIMPROVED PROPERTY
NOT TO SCALE

REVISION DATE	 CITY OF CAPE CORAL UTILITIES DEPARTMENT P.O. BOX 150027 CAPE CORAL, FLORIDA 33915-0027	DETAIL NAME	DETAIL NO.
07-14-2022		1" POTABLE WATER (SHORT & LONG SIDE) RESIDENTIAL DOUBLE SERVICE CONNECTION	W-257
ADOPTION DATE		UNIMPROVED PROPERTY	
08-17-2022			

METER BOX LAYOUT



SECTION



PLAN


NOTES:

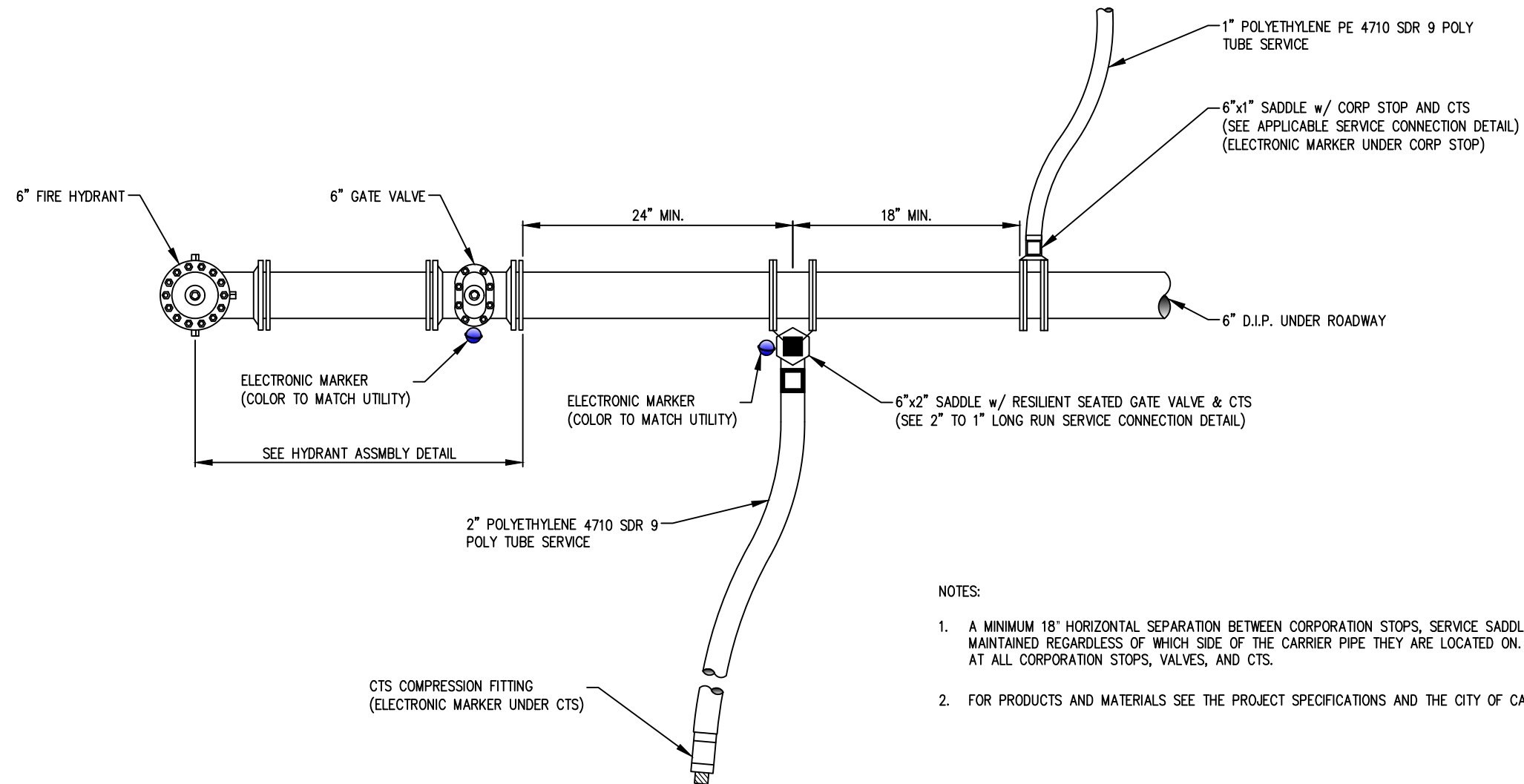
1. SINGLE SERVICES FOR BOTH SHORT AND LONG SIDE SERVICES SHALL BE 2" BLUE PE 4710 ONLY.
2. FOR INSTALLATIONS WHERE THE SERVICE CONNECTION CROSSES DIVIDED STREETS A MINIMUM 3" SCH 40 PVC CASING SLEEVE WILL BE REQUIRED AND MUST EXTEND CONTINUOUS THROUGH THE MEDIAN AND TERMINATE AT LEAST 1 FOOT PAST THE EDGE OF THE PAVED SURFACE. CASING SLEEVE UNDER THE STREET MAY BE BORED/BULLETED INTO POSITION. A MINIMUM OF 24" (2') COVER TO BE MAINTAINED BETWEEN CASING SLEEVE AND PAVED SURFACE.
3. ALL CORPORATION AND CURB STOPS SHALL BE COMPRESSION TYPE FITTINGS.
4. A MINIMUM 18" HORIZONTAL SEPARATION BETWEEN CORPORATION STOPS, SERVICE SADDLES, VALVES, AND/OR FITTINGS SHALL BE MAINTAINED REGARDLESS OF WHICH SIDE OF THE CARRIER PIPE THEY ARE LOCATED ON. ELECTRONIC MARKERS TO BE INSTALLED AT ALL CORPORATION STOPS
5. MAINTAIN REQUIRED SEPARATION BETWEEN IRRIGATION AND POTABLE WATER SERVICE PIPING. SEE DETAILS UG-107 AND UG-109.
6. ALL CURB STOPS SHALL HAVE COLOR CODED TAGS FOR POSITIVE IDENTIFICATION.
7. REFER TO APPLICABLE DRAWINGS AND SPECIFICATIONS FOR PIPE BEDDING REQUIREMENTS. FULLY SUPPORT SERVICE CONNECTION CORPORATION STOP FITTINGS AND POLY TUBE WITH BEDDING MATERIAL WITHIN THE MAINLINE TRENCH WIDTH.
8. REFER TO TYPICAL SECTION SDR 9 POLYETHYLENE POTABLE WATER/IRRIGATION SERVICE BEDDING DETAIL FOR BEDDING REQUIREMENTS.
9. FOR PRODUCTS AND MATERIALS SEE THE PROJECT SPECIFICATIONS AND THE CITY OF CAPE CORAL QUALIFIED PRODUCTS LIST.
10. FOR SERVICE TAPS LOCATED UNDER PAVEMENT, THE CONTRACTOR SHALL INSTALL AN ELECTRONIC MARKER AT THE CORP STOP.
11. METER BOXES SHALL NOT BE PROVIDED FOR UNDEVELOPED PROPERTIES UNLESS OTHERWISE INDICATED.
12. INSTALL RFID LOCATING TAPE PER MANUFACTURER'S INSTRUCTIONS.

W-258

2" POTABLE WATER (SHORT & LONG SIDE) COMMERCIAL/MULTI-FAMILY SINGLE SERVICE CONNECTION - HDPE OPTION - UNIMPROVED PROPERTY

NOT TO SCALE

REVISION DATE		DETAIL NAME	DETAIL NO.
07-14-2022	 CITY OF CAPE CORAL UTILITIES DEPARTMENT P.O. BOX 150027 CAPE CORAL, FLORIDA 33915-0027	2" POTABLE WATER (SHORT & LONG SIDE) COMMERCIAL/MULTI-FAMILY SINGLE SERVICE CONNECTION HDPE OPTION - UNIMPROVED PROPERTY	W-258
ADOPTION DATE			
08-17-2022			



NOTES:

1. A MINIMUM 18' HORIZONTAL SEPARATION BETWEEN CORPORATION STOPS, SERVICE SADDLES, VALVES, AND/OR FITTINGS SHALL BE MAINTAINED REGARDLESS OF WHICH SIDE OF THE CARRIER PIPE THEY ARE LOCATED ON. ELECTRONIC MARKERS TO BE INSTALLED AT ALL CORPORATION STOPS, VALVES, AND CTS.
2. FOR PRODUCTS AND MATERIALS SEE THE PROJECT SPECIFICATIONS AND THE CITY OF CAPE CORAL QUALIFIED PRODUCTS LIST.

W-259 TYPICAL CUL-DE-SAC/END OF LINE
NOT TO SCALE

REVISION DATE
07-14-2022
ADOPTION DATE
08-17-2022



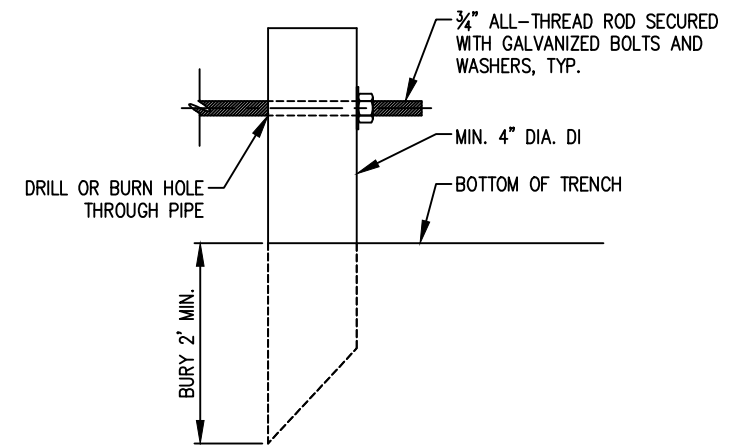
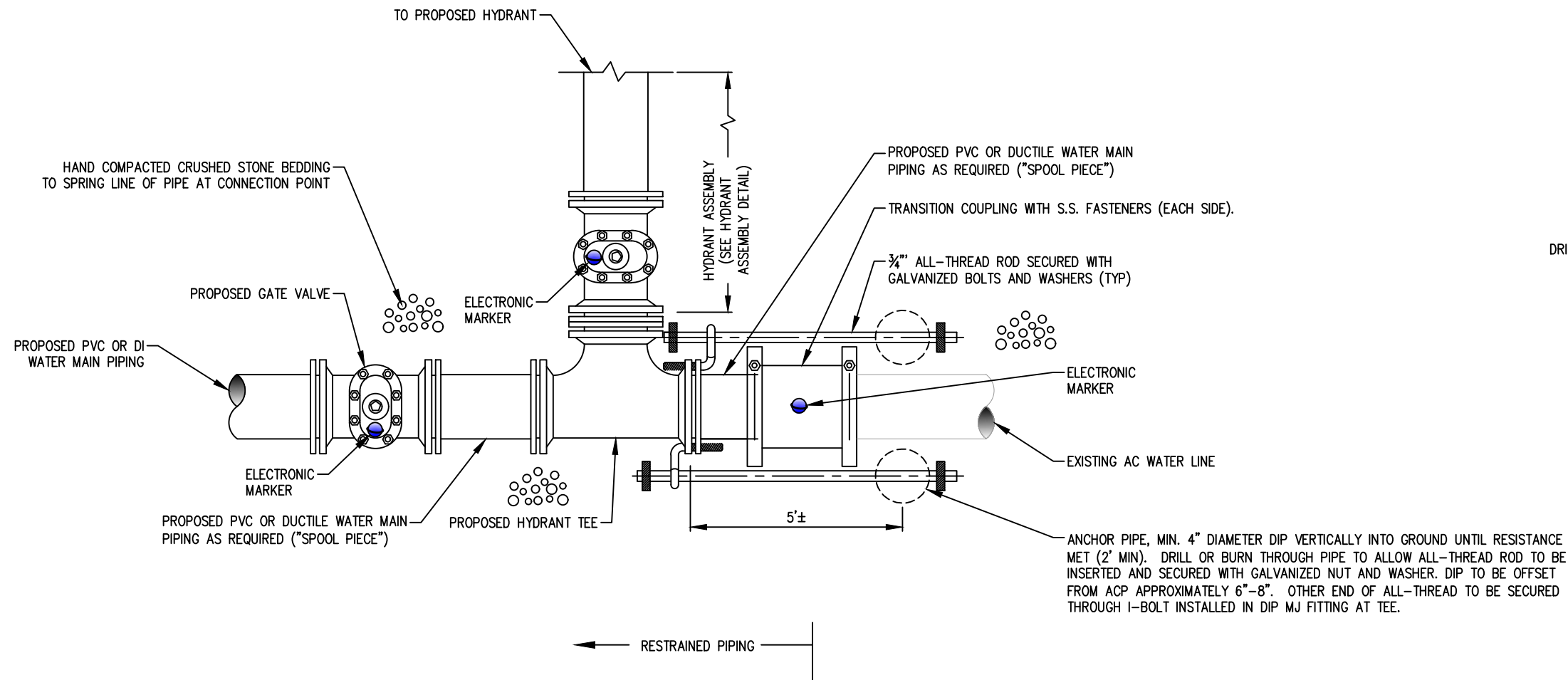
CITY OF CAPE CORAL
UTILITIES DEPARTMENT
P.O. BOX 150027
CAPE CORAL, FLORIDA 33915-0027

DETAIL NAME

TYPICAL CUL-DE-SAC/END OF LINE

DETAIL NO.

W-259




ANCHOR PIPE

NOTES:

1. CONNECTION TO EXISTING AC WATER LINE SHALL BE ACCOMPLISHED WITH DUCTILE IRON (MJ) FITTINGS, DR-18 PVC PIPING ('SPOOL PIECE') AND TRANSITION COUPLING(S) WITH STAINLESS STEEL FASTENERS (PIPING MUST BE RESTRAINED IN ALL DIRECTIONS). ALL CUTTING OF AC PIPING SHALL BE ACCOMPLISHED WITH WET CUTTING.
2. FOR PRODUCTS AND MATERIALS SEE THE PROJECT SPECIFICATIONS AND THE CITY OF CAPE CORAL QUALIFIED PRODUCTS LIST.
3. CONTRACTOR SHALL INSTALL AN ELECTRONIC MARKER AT THE TRANSITION COUPLING AND VALVES.

W-260 **A.C. WATERMAIN CONNECTION**
NOT TO SCALE

REVISION DATE	 CITY OF CAPE CORAL UTILITIES DEPARTMENT P.O. BOX 150027 CAPE CORAL, FLORIDA 33915-0027	DETAIL NAME	DETAIL NO.
07-14-2022		A.C. WATERMAIN CONNECTION	W-260
ADOPTION DATE			
08-17-2022			